

SMART News



SMART Update

By Josh Baldwin

With 488 Users from all 50 states, SMART is now the main reporting tool for the US Forest Service Stewardship Program. There are currently 89,840 active Stewardship Plans in the SMART database for a total of 20 million acres. States utilize SMART in a variety of ways (see *SMART Use Across the States* map on next page). Some states are using SMART as their main mapping and reporting tool. Around half of the states and territories are solely using the SMART Stewardship Accomplishment Data Loader (SADL) tool for reporting annual Stewardship accomplishments, while others are using a hybrid SADL/SMART approach. We hope that as time goes on States will see the value of adding stands, points and linear features to their data and exploring the other options SMART has to offer.

- 488 users from all 50 states
- 89,840 active Stewardship Plans
- 87,603 approved Stewardship Plans
- 20,002,026 reported Stewardship acres

Inside this issue

SMART Update 1

Priority Lands Data 1

SMART Use Map 2

Tips and Tricks 2

SMART Contact Info 3

Regional Coordinators 4

Points of interest

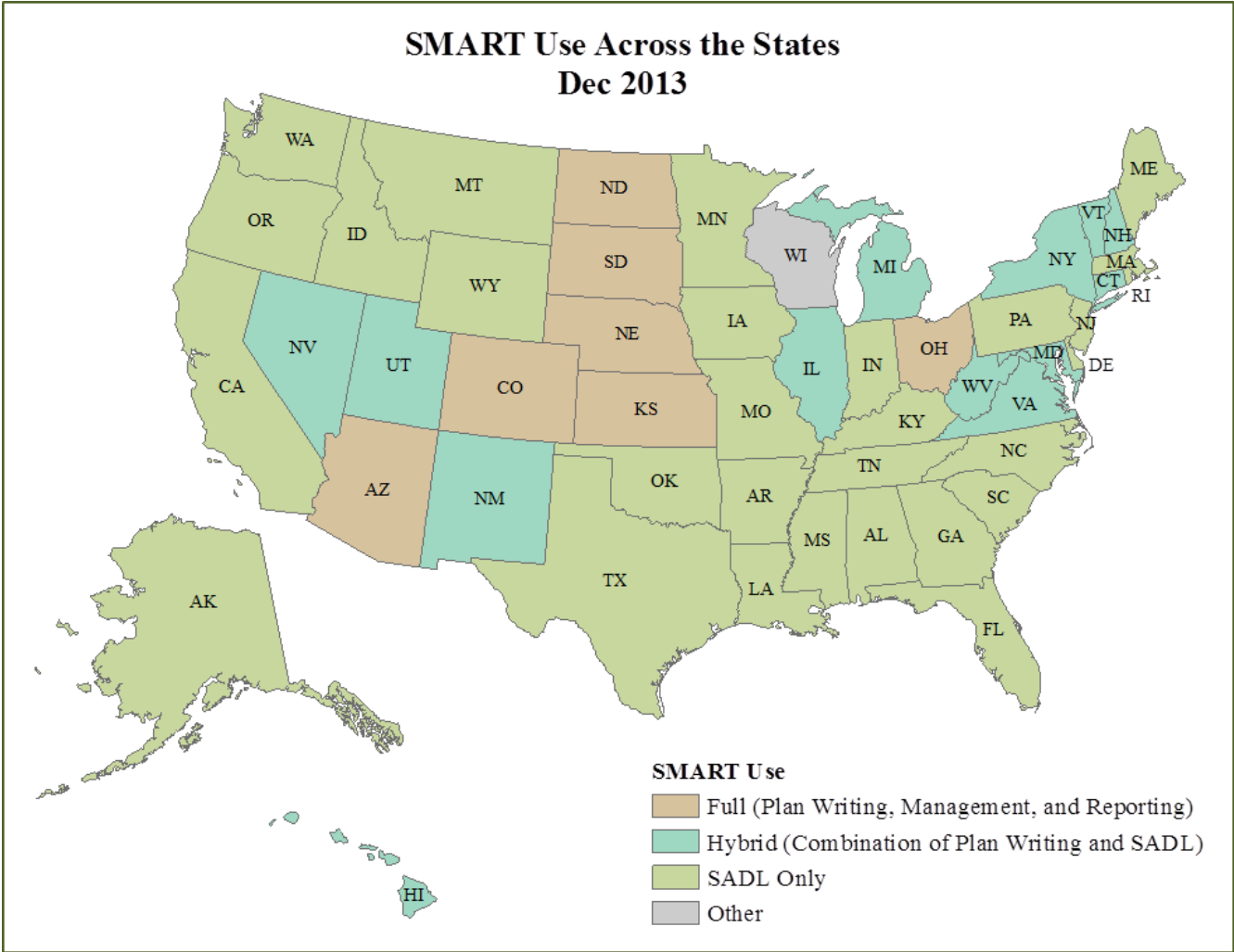
- SMART was released November 1, 2012
- State Priority Lands data due March 31, 2014
- USFS SMART Help Desk: 1-800-908-7550

Important Forest Resource Areas in SMART

by Matt Tansey

The Forest Stewardship Program requires that each state track Forest Stewardship Plan accomplishments with respect to priority—or Important Forest Resource Areas—defined either in State Forest Action Plans or specifically for the Program. States are asked to maintain and update each year, if needed, a raster layer that corresponds to its Important Forest Resource Areas (IFRA’s). These layers are stitched together and work behind the scenes in SMART to analyze stewardship polygons. This is designed to inform the management process and assess the effectiveness of each state’s program. The layers currently used by SMART are approximately two years old and many states have newer versions they are working from. Changes or updates to the priority areas raster layer can be submitted on an annual basis by the end of March of each calendar year. New submissions will be incorporated into SMART and used in October for the reporting process. New submissions are not mandatory but are an opportunity for states to update their priorities and use the most current data available. This also ensures that states and the Forest Service are looking at the same IFRA data. SMART State Administrators can expect to see an email with a link and detailed instructions on how to upload new data to a Forest Service CloudVault website eminently.






Tips for Querying and Searching in SMART



By Luke Tomczak

SMART has a very useful querying and searching function built in for the users convenience. As a SMART user, you may enter one plan or ten plans in a day. For you SADL users out there, it could be hundreds or even thousands of plans in a short period of time. Now that data has been entered into SMART there can be many reasons to go back and find it—anywhere from making edits, to seeing trends on a Statewide level. The SMART searching function allows you to easily do just that.

I recommend starting on your SMART homepage and going straight to [Advanced Search](#). This page is a doorway to your SMART data.

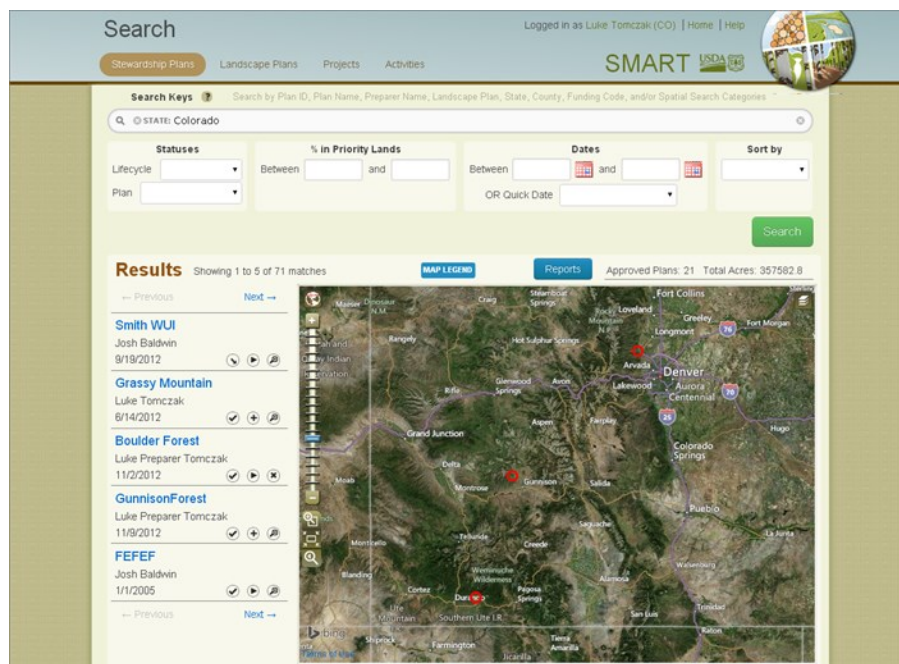
1. If you are new to the SMART search function, the best way to get familiar is to start with the  next to the **Search Keys** at the top of the page. This will give you an overview of all the query options.
2. To start searching, a search parameter needs to be entered in the search bar first. Examples of search parameters are *State, Plan ID, Plan Name, Preparer Name, etc.*
3. Not only can you search for Stewardship plans, the navigation pane also has tabs to search for Landscape Plans, Projects, and Activities.



- The  button above the map will give you the option to download a file that contains all of the results within your search parameters. You can choose from an Excel, Word, PDF, or HTML file for your report output. This is very useful to see trends in Statewide data, view Preparer data, plans in progress, approved plans, and many others.
- The results map is interactive! You can zoom to plans, zoom to a location, change layers, and pan the map. Hovering your mouse cursor over a plan in the plan list will highlight that respective plan on the map, and vice versa.
- These icons next to a plan can quickly tell you information about a plan: . Hover over them to get more information about the icons.
- Clicking on a plan name will take you to that plan's summary page.

Also, don't forget, these tips are based on searching for Stewardship plans. They apply to projects, landscape plans, and activities as well.

Check out our SMART User Guide for more details on searching and other SMART functions.



SMART Contact Information

Josh Baldwin
National Administrator & Help Desk Associate
303-275-5341
jcbaldwin@fs.fed.us

Peter Bedker
USFS SMART Project Lead
651-649-5030
pbedker@fs.fed.us

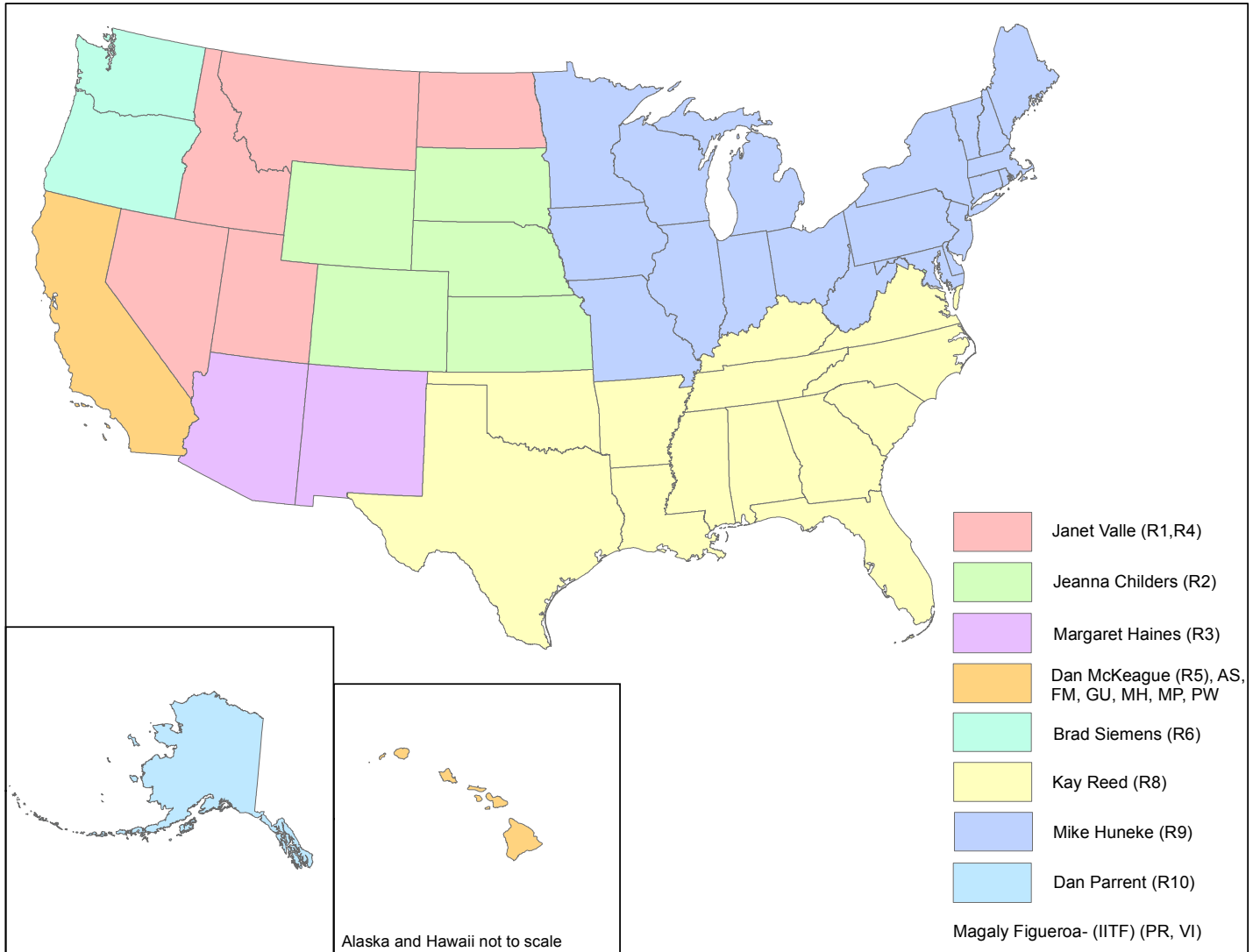
Karl Dalla Rosa
USFS Stewardship Program Manager
202-205-6206
kdallarosa@fs.fed.us

Tom Luther
USFS Northeastern Area GIS Specialist
603-868-7710
tluther@fs.fed.us

Matt Tansey
USFS Washington Office Forest Stewardship Program Specialist
202-401-4489
matthewbtansey@fs.fed.us

Luke Tomczak
National Administrator & Help Desk Associate
303-275-5244
ljtomczak@fs.fed.us

Stewardship Program Coordinators by Region



US Forest Service Stewardship Program Coordinators

Janet Valle

Region 1 & Region 4
801-625-5258
dsessions@fs.fed.us

Margaret Haines

Region 3
505-842-3881
mhaines@fs.fed.us

Brad Siemens

Region 6
503-808-2353
btsiemens@fs.fed.us

Mike Huneke

Region 9
610-557-4110
mhuneke@fs.fed.us

Magaly Figueroa

IITF, PR, VI
787-766-5335
mafigueroa@fs.fed.us

Jeanna Childers

Region 2
303-275-5239
jeannalchilders@fs.fed.us

Dan McKeague

Region 5
707-562-8875
dmckeague@fs.fed.us

Kay Reed

Region 8
404-347-6218
kayreed@fs.fed.us

Dan Parrent

Region 10
907-743-9467
djarrent@fs.fed.us