

SMART News



SMART Update

by Josh Baldwin

FY 2014 Reporting

The SMART Help Desk would like to thank all of our private, state, and USFS partners on a very successful FY 2014 reporting cycle. The SMART database recently hit the 25,000,000 acre mark—just as the Forest Stewardship Program celebrates its 25th anniversary! We encourage states to keep up the reporting momentum and continue to enter stewardship accomplishments all year round.

Webinars

We recently convened two webinars: *Best management practices for creating windbreak plans in SMART* and *What’s new in SMART Version 3*. Both were well attended and we look forward to following these up with even more webinars in the near future, including:

- *Using SMART Data in ArcMap*. This session will provide the basics of downloading a statewide Geodatabase from SMART and working with it in ESRI’s ArcMap. The ArcMap report tool and data driven pages will be highlighted, and templates for SMART data will be shared with participants.
- *LaSR*. This demonstration will show off the new Forest Mapping and Reporting Tool (ForMAP) and the Landscape Scale Restoration (LaSR) module that were included in the SMART Version 4 release.

Webinar invitations and general notifications are based on email addresses in SMART, so if you are not receiving invites or notifications please contact the Help Desk so that we can update your contact information. All users may also update contact information from their User Account page directly in SMART.

SMART Version 4.0 Just Released

by Matt Tansey



SMART Version 4 was released this week! Version 4 does include some improvements and modifications to SMART, but the development focus for Version 4 was to create a grant monitoring tool to replace the application in the NIC Portal. The new module supports spatial reporting of Landscape Scale Restoration Projects and is called “LaSR”. Depending on what roles you have you may not notice any change. Some of you will notice that there is now a SMART button and a LaSR button when you access the web application. This change recognizes that SMART and LaSR are separate and therefore we have named the suite of tools ForMAP: Forest Mapping and Accomplishment Portal. ForMAP will now be the starting point for accessing SMART and LaSR, and potentially more modules that support other programs. Training materials and webinars will be coming up shortly for the LaSR.

Inside this issue

SMART Update	1
Version 4.0	1
ForMAP and LaSR	2
Plan IDs.....	3
Downloading GDBs.....	4
Contact Information	5

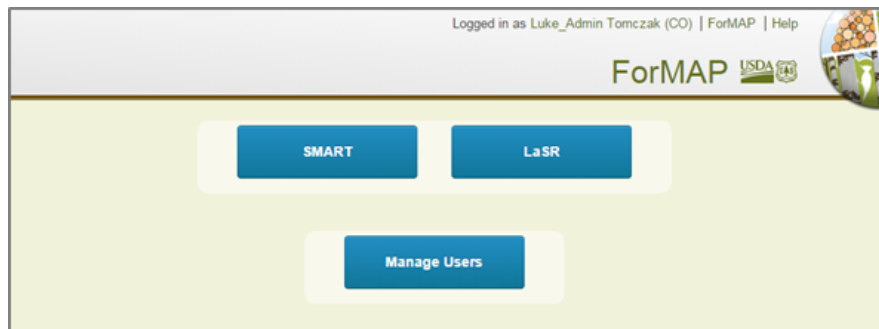
Points of interest

- SMART database hits the 25 million acre mark.
- SMART Version 4 out now!
- Webinars — keep an eye out for upcoming trainings and demonstrations.
- New Landscape Scale Restoration (LaSR) module shipped with SMART Version 4.
- USFS SMART Help Desk: 1-800-908-7550

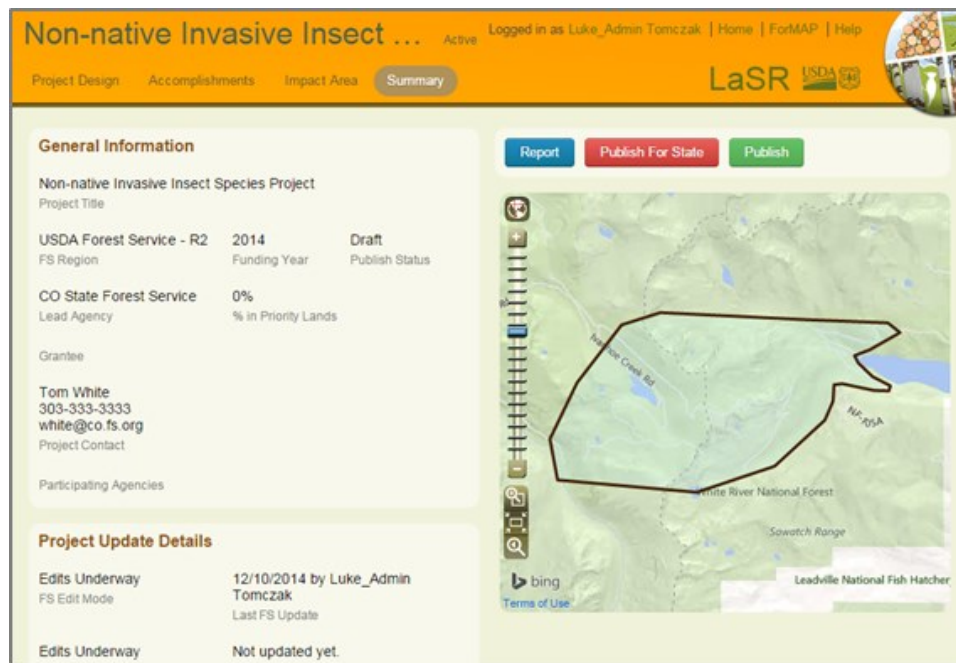
LaSR and ForMAP

By Luke Tomczak

SMART Version 4 includes the Landscape-scale Restoration (LaSR) module for LSR grant reporting. In order to accommodate this module, a new portal—the Forest Mapping and Accomplishments Portal—was built. The new LaSR component in SMART replaces the Stewardship Program’s competitive grants and “Redesign” reporting applications formerly of the NIC portal. All grants data from the NIC portal now resides in the LaSR component of ForMAP. SMART State Administrators can automatically search for LaSR projects, but in order to create and edit LaSR projects, they will need to request the role of LaSR Preparer. Changes to user roles can now be requested directly from users’ SMART Home Page.



USFS Stewardship Program Managers and State Administrators will see familiar and similar elements from the NIC portal; one major change is that LaSR allows for the spatial footprint of the “impact area”. The spatial element that SMART brought to accomplishments reporting has now been applied to LSR grants reporting.

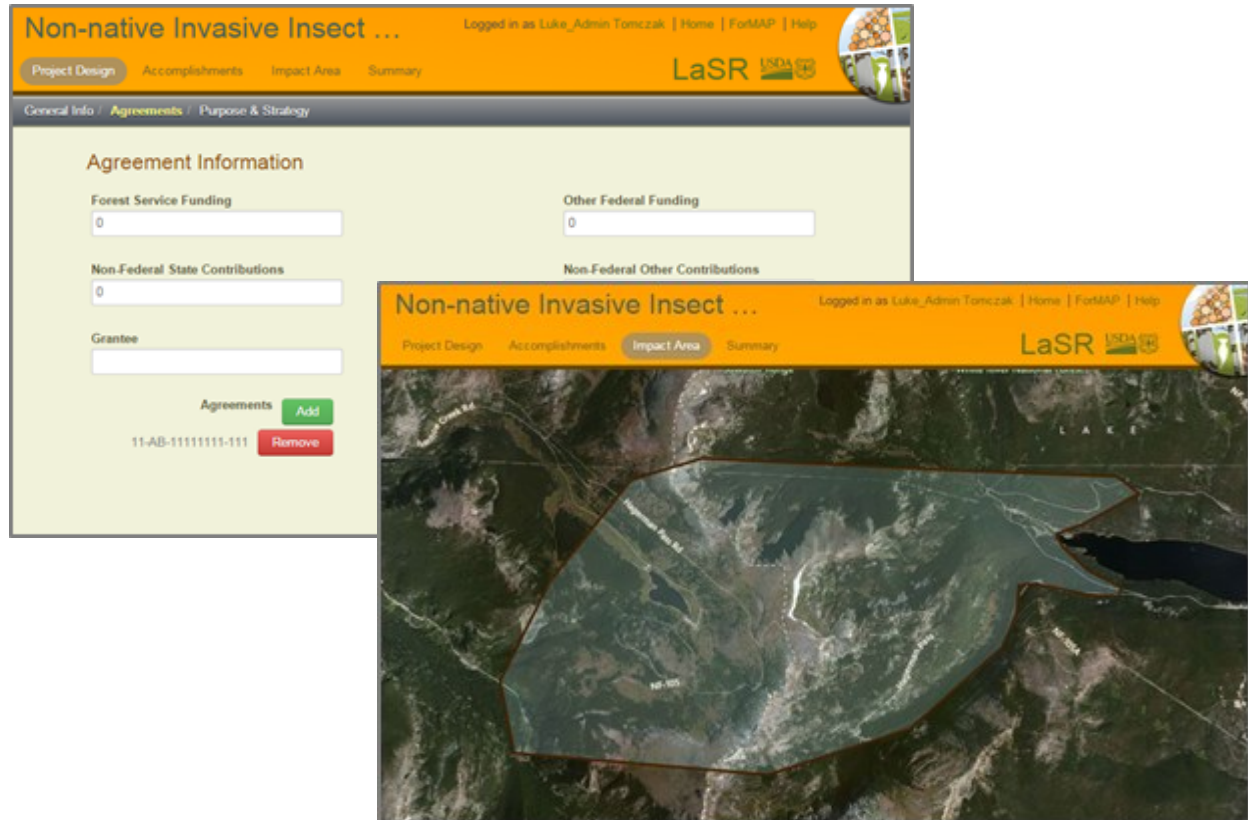


Regional Program Managers will create a new LaSR project in SMART to get the ball rolling. As they create the project they will be able to add a State partner by adding them as the lead state agency. This will then share the project with the SMART state administrator of the project’s state, and a widget will appear on their LaSR home-page in SMART. Once a Regional Manager creates a report, the State Administrator can then makes edits and additions to the project alongside the Regional Manager.

Continued on next page

ForMAP and LaSR Continued

LaSR's functionality and interface mirrors SMART's. There is tabular data entry to start the workflow—which includes general information, agreements, purpose and strategy, and accomplishments. An impact area is then added in the familiar mapping interface used in SMART. Finally, there is the project summary page that allows users to create reports and publish projects.



How to Construct a Plan ID for SMART

By Josh Baldwin

Plan IDs are an important, but sometimes overlooked, element in SMART. This is a key field in the SMART database, as the duplicate plan management tool finds matching plans based on the Plan ID field. Additionally, plan ID queries made to the SMART database as well as state databases may be sorted and viewed more meaningfully if a good plan ID is used. Many states have adopted SMART Plan IDs that mirror their internal database ID field. This is a great way to keep track of plans that have been uploaded to SMART. A numerical (but unique) code like "867-5309" as a plan ID works, but is hard to make sense of, especially for new staff members. Any plan ID that can't be tracked or replicated may be hard to troubleshoot, detect duplicates of, and could cause problems for accomplishments reporting. Besides their usefulness in SMART, defining a plan ID template is part of a good data management practices.

When choosing a Plan ID format, it is crucial to choose an intuitive, consistent, replicable ID. Good plan IDs are often composed of plan components. One example of a strong plan ID format would be "14_FSP_JB_123"—wherein 14 is the plan start year, FSP is the plan category, JB are the initials of the plan preparer, and 123 is a plan number associated with the plan preparer. Other elements like county, town code, or divisional office would work well too. Please keep in mind that these are only suggestions, and that there could be many possible combinations that will work well for your state.

Important, but not as critical is the Plan Name. This is used primarily as a plan identifier for everyday uses and will be a term that is communicated internally as well as to the landowner. Please follow your state's guidance regarding plan names. Many states use some portion of the landowner's last name in the plan name (e.g. "Smith Tree Farm"); as long as there is no explicit personal identifiable information (PII) within the plan name, this is allowable.

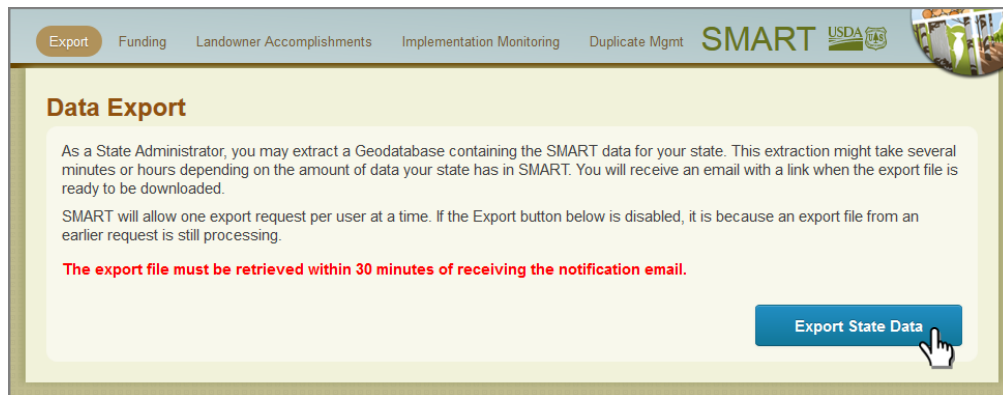
Downloading SMART Data and Viewing it in ArcMap

By Josh Baldwin

State Administrators have the ability to extract all of their state’s approved plans within SMART as a geodatabase (GDB). The GDB can be opened in numerous GIS and database software, but please keep in mind that any changes you make to the offline GDB will not be reflected in SMART.

To Export a Database

1. From your State Administrator home page select the **Administration** button.
2. On the Administration page, make sure the **Export** tab is selected. You will see the Data Export page with instruction on how the process works. When you are ready, click the **Export State Data** button. (Note: SMART will only export approved plans)
3. The amount of time it takes the export to finish depends on how many plans are being extracted. When it is finished SMART will send you an email. You can follow the link in your email to retrieve your state’s geodatabase.



4. Please save the file to a location of your choice and unzip the folder.

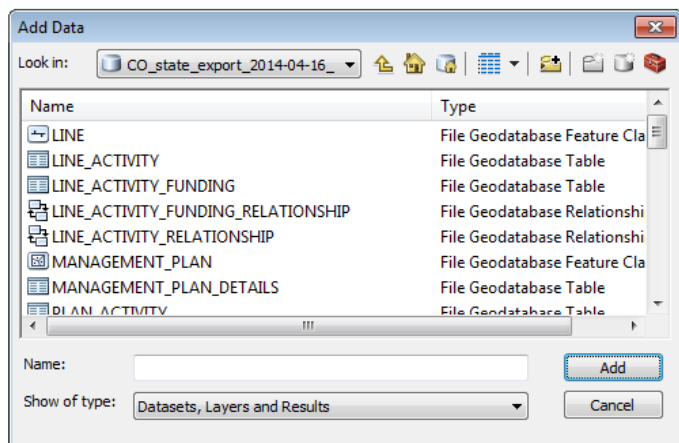
Next, open a session of ArcMap and select the add data button. Navigate to the folder and add the .gdb file. This will present you with a list of GIS features from SMART that may be added. You may choose one, many, or all listed features. There will be three types of files to choose from: Feature Class, Table, and Relationship Class.

Table—a collection of rows, each containing the same fields.

Feature Class—a table that contains a shape field for GIS features such as polygons, lines, and points.

Relationship Class—these are tables that are pre-joined to other tables in order to facilitate querying and viewing various plan details.

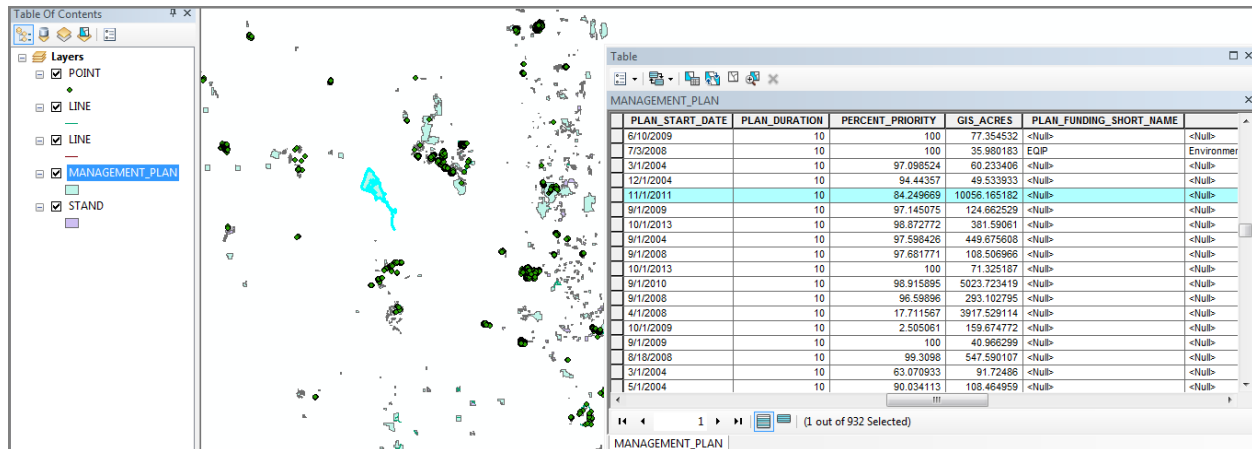
Once added to ArcMap, the GDB elements will be shown in the Table of Contents pane and should be visible in the ArcMap window. If you cannot see any GIS elements, you may need to right-click on the feature in the Table of Contents and select “Zoom To Layer”.



Continued on next page

Downloading SMART Data and Viewing it in ArcMap Continued

Right-clicking on the feature in the Table of Contents will also let you view the attribute table—where the plan’s shape and tabular data is stored. This table is very handy for viewing, selecting, and exploring plan elements.



In the coming months, the SMART Help Desk will be giving a series of webinars on using SMART data in ESRI’s ArcMap, as well as providing guides to all SMART users. The ArcMap report tool, data driven pages, and other ways of exploring data will be shown. ArcMap templates for SMART data will be also be shared with participants.

If you have any questions about using SMART’s GDB in ArcMap, please call or email the Help Desk—we are here to help!

US Forest Service Forest Stewardship Regional Program Managers

Janet Valle

Region 1 & Region 4
801-625-5258
jvalle@fs.fed.us

Alicia San Gil

Region 3
505-842-3289
agsangil@fs.fed.us

Brad Siemens

Region 6
503-808-2353
btsiemens@fs.fed.us

Mike Huneke

Region 9
610-557-4110
mhuneke@fs.fed.us

Magaly Figueroa

IITF, PR, VI
787-766-5335
mafigueroa@fs.fed.us

Jeanna Leurck

Region 2
303-275-5239
jleurck@fs.fed.us

Dan McKeague

Region 5
707-562-8875
dmckeague@fs.fed.us

Kay Reed

Region 8
404-347-6218
kayreed@fs.fed.us

Dan Parrent

Region 10
907-743-9467
djarrent@fs.fed.us

SMART USFS Team Contact Information

Josh Baldwin

National Administrator & Help Desk Associate
303-275-5341
jcbaldwin@fs.fed.us

Karl Dalla Rosa

USFS Forest Stewardship Program Manager
202-205-6206
kdallarosa@fs.fed.us

Matt Tansey

USFS Washington Office Forest Stewardship Program Specialist
202-401-4489
matthewbtansey@fs.fed.us

Peter Bedker

USFS SMART Project Lead
651-649-5030
pbedker@fs.fed.us

Tom Luther

USFS Northeastern Area GIS Specialist
603-868-7710
tluther@fs.fed.us

Luke Tomczak

National Administrator & Help Desk Associate
303-275-5244
ljtomczak@fs.fed.us