

SMART News



ForMAP Update by The Help Desk Team

ForMAP By the Numbers:

	Jan 1 2015	Jan 1 2016
Users—Total	572	802
Users—LaSR Project Preparers	21	245
Approved Forest Stewardship Plans in SMART (Acres)	21,562,673	22,936,660
LaSR Projects	506	605

ForMAP numbers are up in all categories for 2016. The stand-out figure above is the user base, which grew significantly in 2015. This growth was driven mainly by an influx of new Landscape Scale Restoration (LaSR) users, who have been keeping us quite busy here at the help desk!

LaSR Webinar

On December 3, the Forest Stewardship Program’s Washington Office hosted a well-attended national webinar on the new Landscape Scale Restoration grant reporting tool, LaSR. If you would like more information about the Landscape Scale Restoration competitive grant process, please contact your regional program manager (contact information on page 4). If you’d like our LaSR guidance document or link to the webinars, drop us a line here at the Help Desk.

Forest Stewardship Program 25th Anniversary Meeting

October 20-22, the Forest Stewardship Program convened their bi-annual national meeting in Vancouver, WA at the Heathman Lodge. The ForMAP team gave a short update on SMART and LaSR, then handed the microphone to Mindia Brown of Timmons Group, the ForMAP developers. Mindia wowed the audience with a demonstration of State and Private Forestry’s upcoming website Prism—which will allow the general public to view program accomplishments across the U.S.



Figure 1: Panorama of the Columbia River Gorge. Taken during the field trip of the Forest Stewardship Program national meeting.

Inside this issue

- Update 1
- LaSR Round-up 2
- 2016 Plan Monitoring 2
- Priority Lands Updates.....3
- Contact Information 3-4

Points of interest

- SMART Version 5 and Prism out soon
- 2016 Plan Monitoring sample pool will be chosen in Mid-January
- Priority Lands datasets are due March 31
- USFS ForMAP Help Desk: 1-800-908-7550

Update Continued

Help Desk website under construction

Our new site will have up-to-date ForMAP information, links to webinar videos, as well as all of our User guides and training materials. We will be sending out the website link early in the new year—so be on the lookout for that.

SMART Version 5 and PRISM

In early 2016, SMART version 5 will be released. Alongside the new version of SMART, which includes helpful enhancements like a spatial duplicate management tool, updates to the SADL, and a number of minor bug fixes, our new website –Prism—will be released. As you may have heard Prism is designed to be a public facing tool to summarize Forest Stewardship Program and LaSR accomplishments. Just as a forester’s wedge prism helps derive information from a forest stand, our Prism will help members of the public understand our programs. As partners enter data in SMART or LaSR, the Prism can be used to summarize those data and create maps, tables and charts. Keep in mind that no individual stewardship plan data or personal information will be visible on this site. For those of you who are using LaSR, for Landscape Scale Restoration Projects, a site is being developed for the public to be able to search and download project briefs as well.

We are very excited about these public outreach efforts and hope they will increase the visibility and communicate the importance of these programs. Based on the presentation from Timmons Group at the national meeting, you are too. 2016 will bring some great advances in the form of Prism and LaSR.

2016 Forest Stewardship Plan Implementation Monitoring

By The Help Desk Team

The intent of the Forest Stewardship Program plan monitoring effort is to reliably assess the extent to which current Forest Stewardship Management Plans are being implemented. In collaboration with states, national guidance was developed to get a meaningful, randomly selected, statistically reliable sample pool—while not placing an unreasonable burden on state partners.

As of 2015, states are using SMART to generate their plan monitoring sample each year, and to record monitoring results. The following summarizes the process within SMART:

- A SMART National Administrator will start the monitoring process by flagging plans nationwide in SMART; only approved Forest Stewardship plans will be selected. This will be done in Mid-January.
- SMART State Administrators will then be able to download a comprehensive report of their state’s flagged plans from the Implementation Monitoring page in their Administration module. This report will allow State Administrators to see what plans have been flagged for their state and the monitoring status of the plans.
- SMART users who are listed as Plan Preparers for the flagged plans will see a *Plans flagged for monitoring* widget on their home page, and they’ll be able to navigate to the plan and mark it as “implemented” or “not implemented”.

Once the plans are flagged in SMART, the Help Desk will send out detailed guidance on the implementation monitoring procedures in SMART. One important note about this new process is that states will not be able to choose their own plans for monitoring. We do understand that this might be a big change from how your state had drawn plans in the past. We recommend two things for a successful monitoring effort: 1) call us here at the Help Desk early and often with questions, and 2) get a plan in place before the summer inspection season kicks off.

Important Forest Resource Areas Updates

By Josh Baldwin

Every state and U.S. territory tracks Forest Stewardship Plan accomplishments with respect to priority lands (aka Important Forest Resource Areas - IFRAs). These datasets are used in SMART to visualize forest management priorities and to calculate what percentage of these priority areas fall within our nearly 150,000 Management Plans. Updating IFRA datasets, especially through the State Forest Action Plan process, can be an important tool for land management agencies and stakeholders to refine forest resource priorities.

With that in mind, changes or updates to the priority areas raster layer can be submitted on an annual basis by the end of March each year. New submissions are not mandatory, but an opportunity for states to update their priorities and have the most current data in SMART. If an update is needed for the purposes of FY 2016 reporting, states should provide their IFRA raster data to the Forest Service by **March 31, 2016**.

The ForMAP Help Desk will be sending out an email in February to Stewardship program administrators and state GIS staff with a link and detailed instructions on how to upload new data to our Forest Service CloudVault website. If you have any questions about the process, please contact us here at the Help Desk.

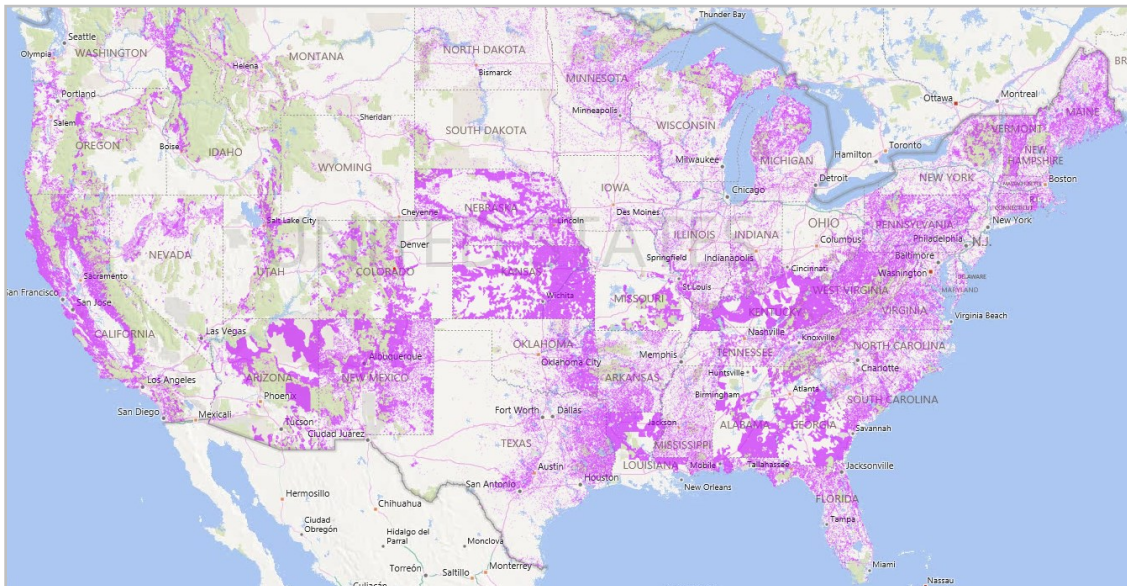


Figure 2: Priority Lands (aka Important Forest Resources Area) purple layer in SMART.

USFS ForMAP Team Contact Information

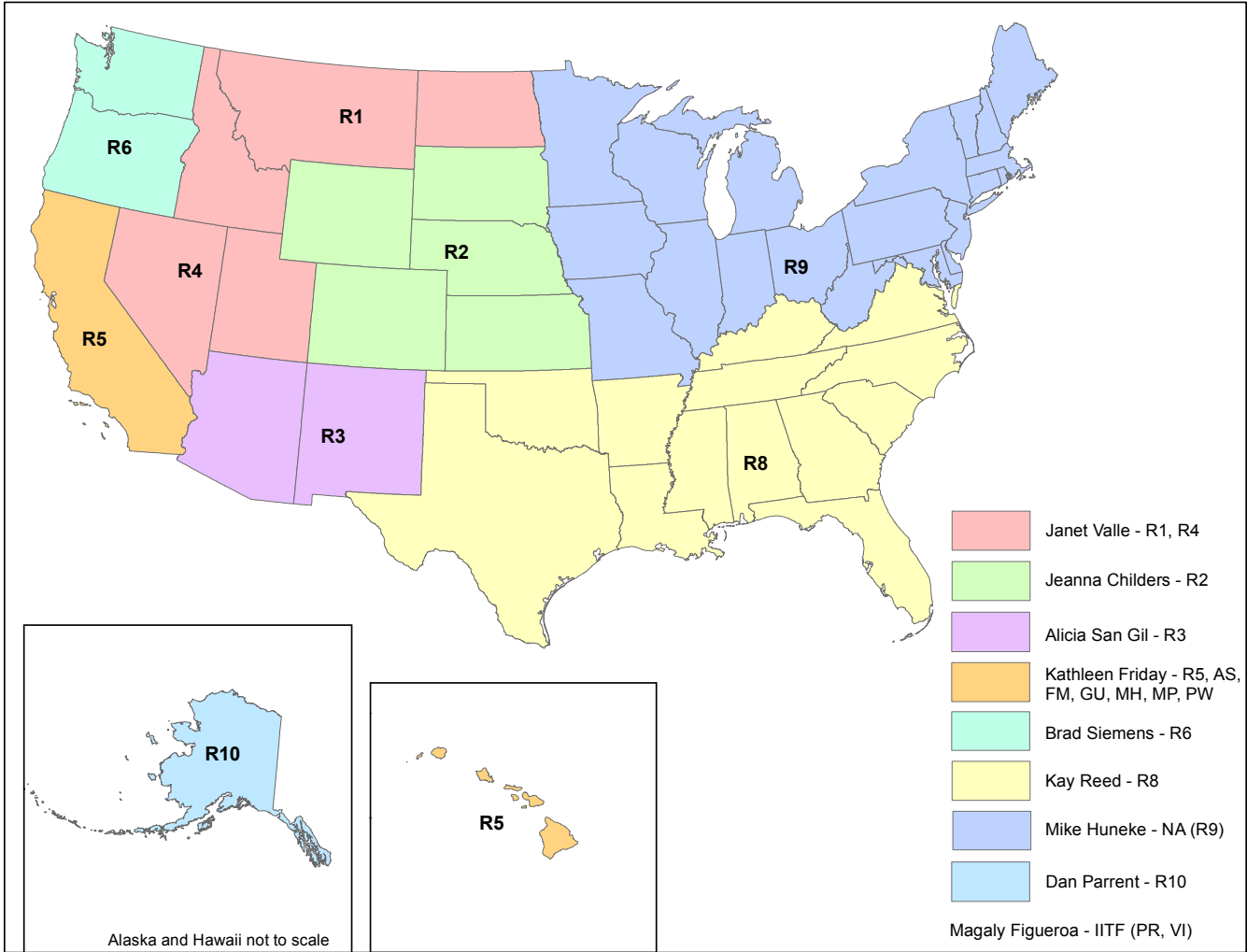
Peter Bedker
USFS ForMAP Project Lead
651-649-5030
pbedker@fs.fed.us

Matt Tansey
USFS Washington Office, Forest
Stewardship Program Specialist
202-401-4489
matthewbtansey@fs.fed.us

Tom Luther
USFS Northeastern Area
GIS Specialist
603-868-7710
tluther@fs.fed.us

Josh Baldwin
ForMAP National Administrator
& Help Desk Associate
303-275-5341
jcbaldwin@fs.fed.us

Kelli Groy
ForMAP National Administrator
& Help Desk Associate
303-275-5244
kgroy@fs.fed.us



US Forest Service Forest Stewardship Regional Program Managers

Janet Valle
 Region 1 & Region 4
 801-625-5258
 jvalle@fs.fed.us

Alicia San Gil
 Region 3
 505-842-3289
 agsangil@fs.fed.us

Brad Siemens
 Region 6
 503-808-2353
 btsiemens@fs.fed.us

Mike Huneke
 Northeast Area (R9)
 610-557-4110
 mhuneke@fs.fed.us

Magaly Figueroa
 IITF, PR, VI
 787-766-5335
 mafigueroa@fs.fed.us

Jeanna Leurck
 Region 2
 303-275-5239
 Jlleurck@fs.fed.us

Kathleen Friday
 Region 5
 808-854-2620
 kfriday@fs.fed.us

Kay Reed
 Region 8
 404-347-6218
 kayreed@fs.fed.us

Dan Parrent
 Region 10
 907-743-9467
 djparrent@fs.fed.us

