

ForMAP News



ForMAP Update

By Josh Baldwin

ForMAP By the Numbers	Jan 2017	Aug 2017	Dec 2017
Users — Total	945	995	1,072
Users — LaSR Project Preparers	333	354	375
Users — ForHealth	—	—	81
Approved Forest Stewardship Plans	149,340	151,152	155,863
Approved Forest Stewardship Plans (Acres)	26,449,917	26,611,168	27,728,972
LaSR Projects — Draft	234	120	224
LaSR Projects — Published	157	197	87
LaSR Projects — Complete	272	342	383
Forest Health Projects - Draft	—	—	635
Forest Health Projects - Proposed	—	—	346
Forest Health Projects - Rejected	—	—	12
Forest Health Projects - Approved	—	—	1,997

Inside this issue

ForMAP Update	1
SMART Reporting	2
ForMAP V 5.1.0.....	3
ForMAP Contact Info.....	3
IFRA datasets due soon.....	4
USFS Contact Info	5

General info

ForMAP Web Application:

<https://apps.fs.usda.gov/formap>

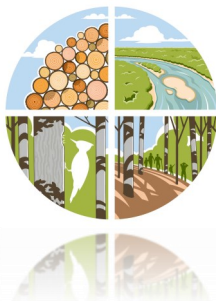
USFS ForMAP Help Desk:

- www.formap.info
- 1-800-908-7550
- support@formap.kayako.com

Outreach

- Nov 30 — LaSR Webinar. We hosted a well-attended webinar on the Landscape Scale Restoration grant reporting ForMAP module, LaSR. The link to a recording of the webinar can be found on our Help Desk website: <http://www.formap.info/user-guides-webinars/>. The FY 18-19 LSR National Guidance document is also available on the web page for your perusal.
- Dec 15 — Southern Group of State Foresters – GIS Committee Winter Meeting. Josh Baldwin and Timmons Group Project Manager Mindia Brown gave updates on ForMAP to this key partner. Mindia looks forward to attending their annual meeting in Alabama next year.

What's new?



Matt Tansey, Forest Stewardship specialist and ForMAP manager, has moved to an IT management position in Fire and Aviation Management. We hate to see him go—but wish him well! Jeremy Peichel, watershed forester with the Northeast Area, is currently the acting Forest Stewardship Specialist out of the Washington Office. His contact information is on page 2.

The outreach team is excited to present a new video series aimed at providing ForMAP users, rookies and veterans alike, with introductory topics, up-to-date features, tools tips, etc. The first video on how to set up a SMART account is up on the Help Desk website. Take a look, and let us know what you think! <http://www.formap.info/user-guides-webinars/>

The new Forest Health Protection reporting tool, ForHealth, is now alive and well inside ForMAP. Eighty users have signed up for ForHealth roles, and they have entered almost 4,000 projects into the database.

FY 2017 SMART Reporting

By Jeremy Peichel

Spatial data entered in SMART have been the primary data sources for the Forest Stewardship Program for several years, but this year we hit a milestone. Since 2013, we have entered most of our acreage through SMART with some significant acreage numbers coming in via SMART-ar as tabular data (no spatial information). Designed as a check to ensure accurate reporting, SMART-ar was intended to supplement and correct the annual SMART roll-up that is then approved by state and regional program managers.

As a program, over the last five years, we have relied less and less on post-SMART corrections in SMART-ar (table below). We began in fiscal year 2013 at 77.5% of acres in SMART; in 2017, we hit a major milestone of over 95% of our plan accomplishment acres entered as spatial data in SMART. That is an important achievement and demonstrates the shared commitment we have to providing program data in a standard spatial format that promotes accomplishment sharing with Congress and other program stakeholders. Thank you for your continued effort in building our dataset and improving the completeness of SMART plan data.

Fiscal Year	SMART Total Acres	SMARTar Total Acre	Total	Percent SMART
2013	16,031,602	4,655,677	20,687,279	77.5%
2014	21,562,673	4,480,197	26,042,870	82.8%
2015	22,936,660	1,950,487	24,887,147	92.2%
2016	23,673,530	2,133,484	25,807,014	91.7%
2017	22,643,064	1,112,563	23,755,627	95.3%

A note from the Help Desk

Along with Forest Stewardship plan acres, there are many other state accomplishments that can be reported directly inside SMART:

Required Measures

- Landowner Assistance
- Landowner Education
- Plan Monitoring
- EQIP Management Plans

Optional Measures

- Practice or other forest management plans
- Acres in Important Forest Resource Areas covered by Practice or other Forest Management plans

USFS ForMAP Team Contact Information

Peter Bedker

USFS Northeast Area, Office of
Knowledge Management
ForMAP Project Lead
651-649-5030
pbedker@fs.fed.us

Tom Luther

USFS Northeastern Area
GIS Specialist
603-868-7710
tluther@fs.fed.us

Jeremy Peichel

USFS Washington Office, Forest
Stewardship Program Specialist (Acting)
651-649-5221
jpeichel@fs.fed.us

Josh Baldwin

ForMAP National Administrator &
Help Desk Associate
303-275-5341
jcbaldwin@fs.fed.us

Kelli Groy

ForMAP National Administrator &
Help Desk Associate
303-275-5341
kgroy@fs.fed.us

ForMAP Version 5.1

By Mindia Brown

With the development and installation of ForMAP Version 5 behind us, our development team has been working hard on fine-tuning items across the entire suite of applications. Version 5.1.0 is targeted for release in February and will include enhancements and fixes listed below. User feedback continues to help us identify where to make improvements, and we will be working on even more SMART and LaSR features in coming releases. ForMAP V5.1.0 includes:

ForHealth module

Enhancements

- View Integrated Acres by Fiscal Year
- Flag Projects as part of the “Slow the Spread” initiative
- Allow the same host to be used for Primary and Secondary disturbances
- Allow 0 accomplishment acres when there are 0 Treatments
- Tracking Initiatives per Accomplishment

Bug fixes

- Ensure user can pick “Human Activities > Other Human Activities” as disturbance
- Lifting the WKT Character (coordinate text) limit on uploaded treatment polygons

SMART module

Enhancements

- Update SADL Guidance Page (related to duplicate detections & multiple Plan types)
- Cap Priority Lands % at 100% (due to raster math, where pixel areas are counted even when pixel parts are outside the plan/project)
- Displaying more meaningful Priority Lands calculation information when percentage not available (instead of “-1” and “N/A”)

Bug fixes

- Bug fix: Priority Lands calculations refactoring
- National Administrator plan flagging for Implementation Monitoring
- Removing limit of 50 on user list - for Bulk Plan Reassign
- Removing limit of 50 on user list - for Adding Plan Approvers/Preparers
- Removing inactive users from list - Bulk Plan Reassign
- Removing inactive users from list - Adding Plan Approvers/Preparers
- Ensuring all plans that are expired are marked as expired in the database
- Fix misplaced symbology icons on Management Plan map page (in Internet Explorer)
- Fix Plan Start Date pulling from wrong field on Management Plan Report
- Bug: Plan Name and Plan ID links on expiration email are going to wrong URLs
- Ensure double quotes in plan name does not break the plan summary page

LaSR module

Enhancements

- Enhancement: Cap Priority Lands % at 100% (due to raster math, where pixel areas are counted even when pixel parts are outside the plan/project)

Bug fixes

- Bug fix: Search results pagination gets 'stuck'
- Bug fix: Priority Lands calculations refactoring

Important Forest Resource Area Datasets due March 31

By Josh Baldwin

The window for submitting state Important Forest Resource Area (IFRA) datasets—known as Priority Lands in ForMAP—is fast approaching. We will be opening up the USFS CloudVault data repository from March 1 to March 31 to give states a chance to update their datasets. Forest Stewardship and GIS state coordinators: please be on the lookout for an email from the Help Desk at the end of February regarding the opportunity to submit this important dataset.

IFRA datasets are visible in SMART and LaSR as a Priority Lands base layer, which can be turned on and off in the mapping interface. Priority lands for select U.S. regions are shown below.

Although states are not required to update their IFRA annually, many states and territories fine tune their datasets regularly. The data is generally derived from State Forest Action Plans. Information on Forest Action Plans can be found on the National Association of State Foresters website: <https://stateforesters.org/regional-state>.

Here is a list of states and territories that have recently submitted updated datasets:

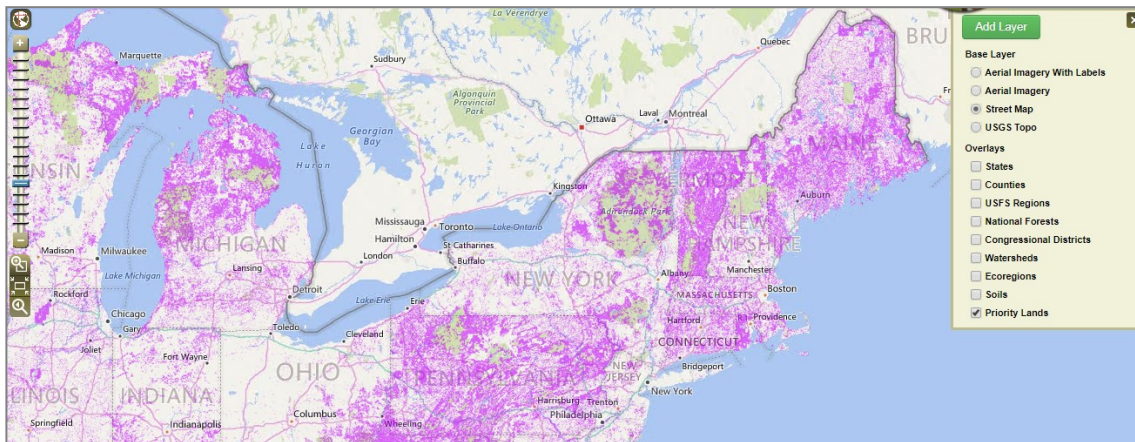
2015—Oklahoma, Puerto Rico, Utah

2016—Florida, Georgia, New Jersey, Puerto Rico, Utah

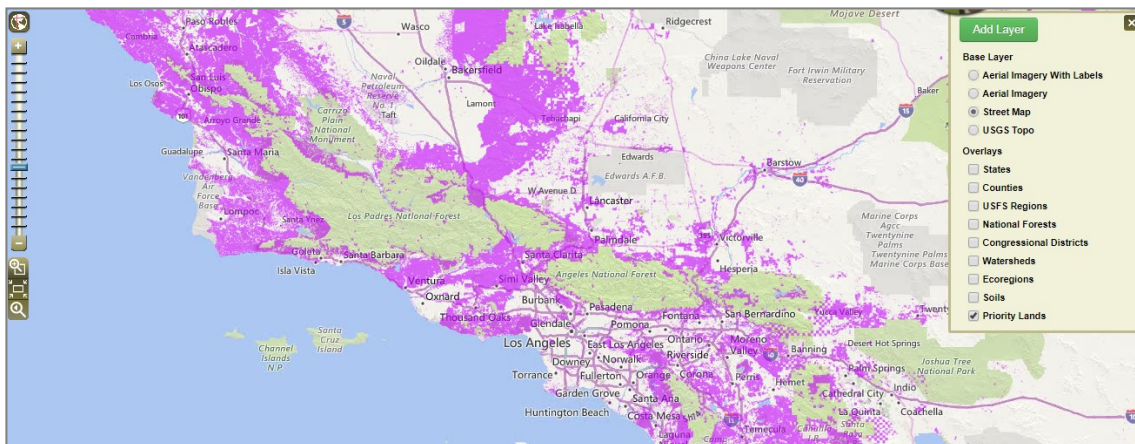
2017—Maryland, Nevada, South Dakota, West Virginia, Wyoming

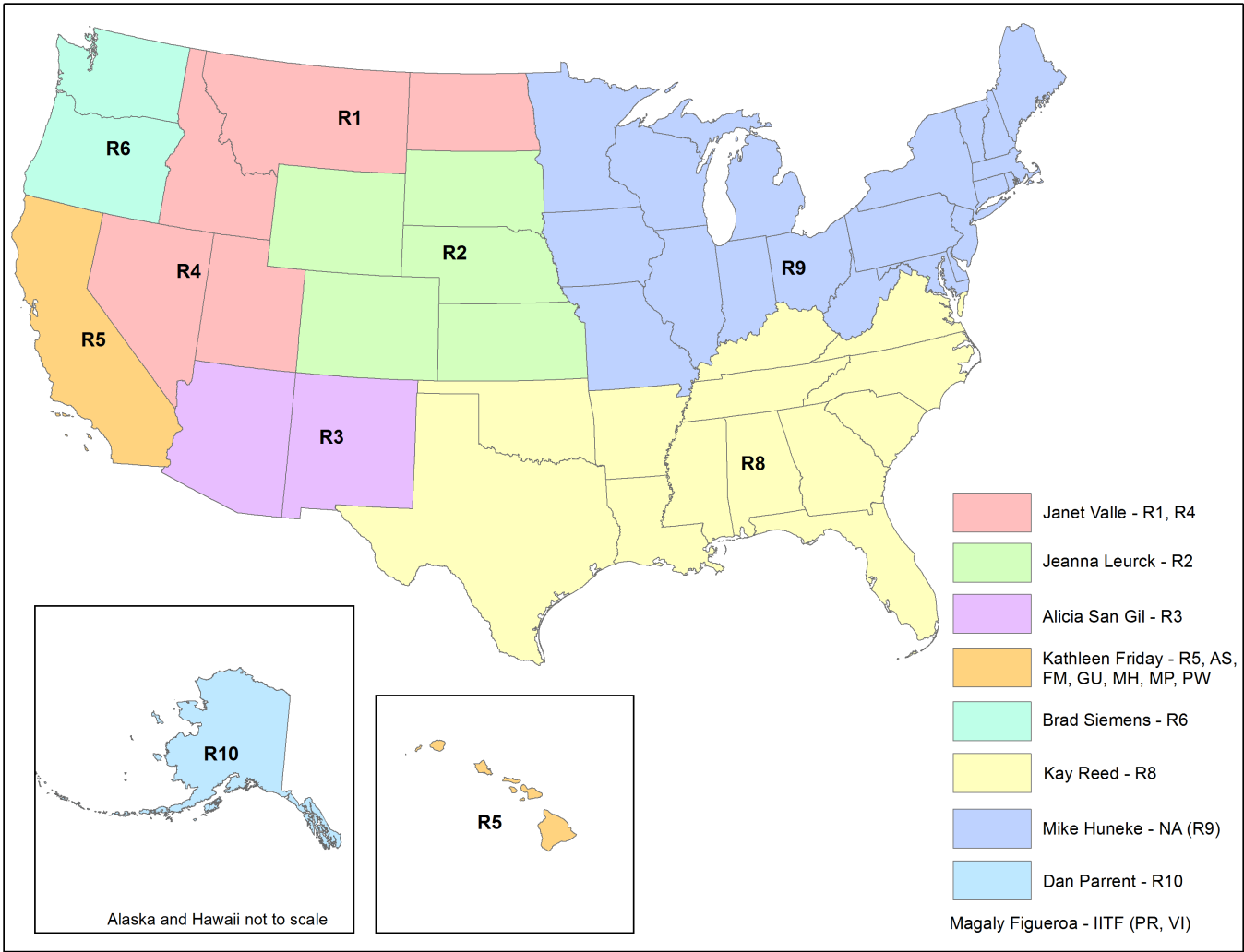
2018 (So far)—New Mexico

Northeastern and Upper Midwest Priority Lands



Southern California Priority Lands





US Forest Service Forest Stewardship Regional Program Managers

Janet Valle
Regions 1 & 4
801-625-5258
jvalle@fs.fed.us

Laura Moser
Region 3
505-842-3887
lmoser@fs.fed.us

Brad Siemens
Region 6
503-808-2353
btsiemens@fs.fed.us

Kay Reed
Region 8
404-347-6218
kayreed@fs.fed.us

Dan Parrent
Region 10
907-743-9467
djparrent@fs.fed.us

Jeanna Leurck
Region 2
303-275-5239
jeannalrck@fs.fed.us

Kathleen Friday
Region 5
808-854-2620
kfriday@fs.fed.us

Mike Huneke
Northeast Area (R9)
610-557-4110
mhuneke@fs.fed.us

Magaly Figueroa
IITF, PR, VI
787-766-5335
mafigueroa@fs.fed.us