

ForMAP News

December 15, 2019



ForMAP Update

By Josh Baldwin, ForMAP National Administrator & Help Desk Associate

ForMAP By the Numbers	July '18	April '19	Dec '19
Users — Total	1157	1236	1289
Users — LaSR Project Preparers	413	431	441
Users — ForHealth	93	105	115
Approved Forest Stewardship Plans	133,902	136,380	148,875
Approved Forest Stewardship Plans (Acres)	23,162,913	23,533,114	24,160,915
LaSR Projects — Draft	96	119	125
LaSR Projects — Published	161	144	152
LaSR Projects — Complete	442	488	494
Forest Health Projects - Draft	640	675	661
Forest Health Projects - Proposed	314	450	355
Forest Health Projects - Approved	2200	2451	2740
Forest Health Projects - Rejected	16	19	34

Inside this issue

ForMAP Update	1
Modernizing FSP	1
What's New in ForMAP	2
Prism is here!	3
Plan Monitoring	5
ForMAP Contact Info	5
USFS Map and Contact Info	6

General info

ForMAP Web Applications:

<https://apps.fs.usda.gov/formap>

<https://apps.fs.usda.gov/prism/>

USFS ForMAP Help Desk:

www.formap.info

303-275-5341

Outreach Highlights

- April 23-25 — Northeast-Midwest State Foresters Alliance (formerly NAASF) Cooperative Forest Management Meeting in Columbus, OH. The ForMAP team presented new features, results from our recent user survey, and provided an update on Prism.
- May 9 — ForMAP Version 6 was deployed. This release ushered in Prism, our new Executive Dashboard.
- May 30 — The Help Desk hosted a Plan Monitoring webinar. The recording is available on our Help Desk Website: <https://www.formap.info/>.
- July — Processed new Priority Lands datasets received from states.
- Sept 19 — SMART Reporting and Prism Webinar.
- Dec 13 — Annual LaSR Webinar for USDA Forest Service grant monitors and LSR grant recipients.

Modernizing Forest Stewardship

By Laurie Schoonhoven, Forest Stewardship National Program Manager

The Forest Stewardship Program, as the primary private forest landowner assistance program in the U.S., serves as a “gateway” through which landowners can gain access to a variety of assistance and programs including USDA cost-share, State tax abatement, and forest certification. The program has experienced a roughly 50% decline in funding since its creation in 1990. FY 17-19 Senate marks recommend the program “consider developing outcome-based reporting for this program and urges the Service to reevaluate whether allocating program funding using the current allocation formula is the most effective use of program resources.” (continued on next page)

Modernizing Forest Stewardship (Continued)

In February 2018 Cooperative Forestry leadership organized a working group of key external partners and agency staff to develop viable options for where we can take the program in the future and develop an allocation formula that aligns with the new program direction. In 2019 the working group, in collaboration with NASF Forest Resource Management committee, developed a draft allocation formula. NASF briefed Senate appropriations staff on the proposed programmatic and allocation changes. Appropriators are very pleased with the changes.

In early December, the Forest Service hosted a series of webinars on the proposed allocation formula for state forestry agency staff. A recorded version is available at this [link](#). The proposed formula rewards states for the breadth of technical assistance they provide to landowners and the resulting on-the-ground outcomes. States will be credited for landowner education, technical assistance, and all active management plan acres written through the Forest Stewardship program including practice plans, tax abatement plans, American Tree Farm plans, and Forest Stewardship plans. This plan data is already reported through SMARTar and will feed into the proposed allocation formula.

One new component of the allocation formula is “*Implemented Plan Acres*,” which includes the breadth of plans mentioned above. States currently monitor a sample of Forest Stewardship plans and the monitoring form asks for implemented forest management activities and acres. We are developing a FAQ document and will share it with you in January. We also look forward to discussing the Modernizing effort during the national Forest Stewardship meeting in February.

What’s new in ForMAP?

By Josh Baldwin

The development team has been working on enhancements and bug fixes to ForMAP. Version 6.0, released in May, included several minor bug fixes and our new publicly-facing website, Prism.

Prism

This “Executive Dashboard” was designed and developed by the Forest Service to interactively inform and educate Forest Service leadership, delivery partners, and beneficiaries on how State and Private Forestry program’s accomplishments are impacting the landscape. Data is pushed weekly from ForMAP to reflect the most current state of impacts available. Please see the following page on more details about Prism.

LaSR

- LaSR Project Impact Area Map requirement
- LaSR Project Quantitative Accomplishments
- USFS Project Contact needs to be selected for each project—from the new Project Contact dropdown
- Search by lead state agency and USFS Contact

ForHealth

- The development team has been working with Acting Forest Health Protection Program Manager, Chris Dietrich. A number of fixes to the integrated acres module are queued up for Version 6.1, and ForHealth enhancements are currently being discussed.

SMART

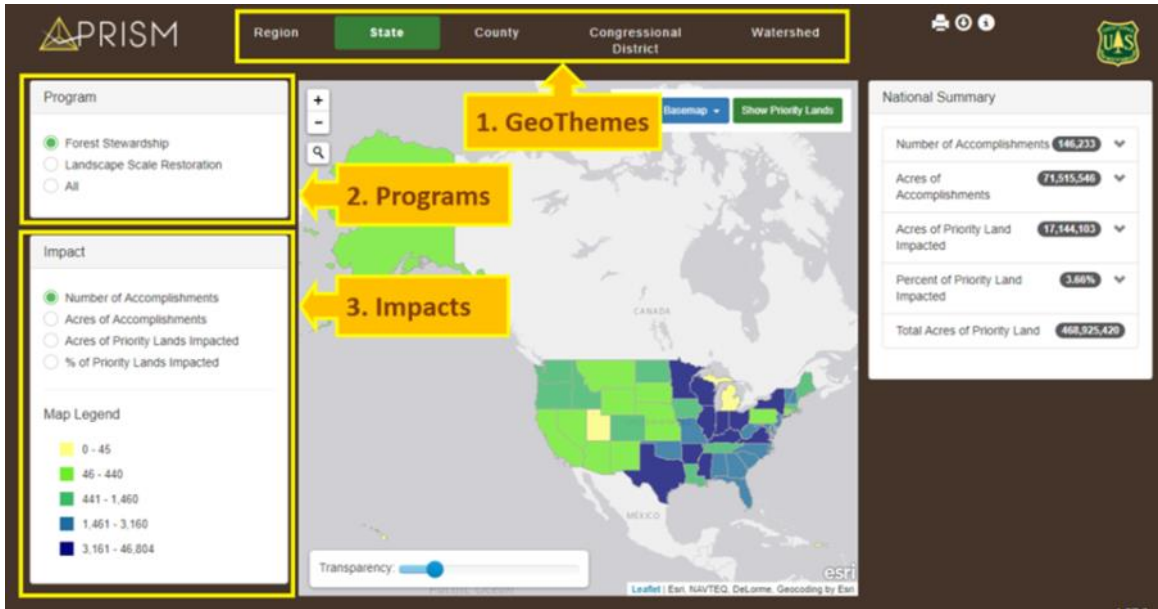
We are looking forward to see what changes and enhancements to SMART and SMARTar come out of the Modernizing Forest Stewardship initiatives.

Prism is here!

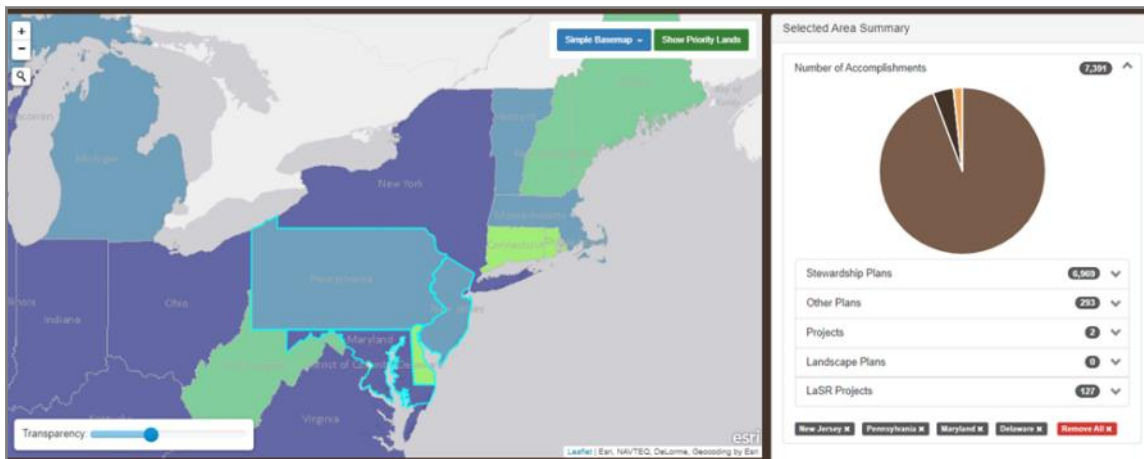
By Kelli Groy, ForMAP National Administrator & Help Desk Associate

The recent release of ForMAP Version 6.0 brought to life our newest ForMAP product, Prism. It was developed by the USDA Forest Service for general users to interactively explore key accomplishments of State & Private Forestry Programs, and to discover current assessments of landscape impacts in a meaningful way. Prism extracts and displays data spatially and numerically from ForMAP weekly.

Prism is simple and makes it easy to navigate all sorts of combinations within the map interface. There are three primary accomplishment components to explore: 1) GeoThemes, 2) Programs, and 3) Impacts.



Using a process of geospatial analysis, Prism intersects mapped accomplishment areas with each GeoTheme and with Priority Land areas. It calculates and stores 29 values for each mapped boundary area in the five GeoThemes. The selections you make determine the geographic scale and map symbols; areas are shaded in proportion to the measured Impact Values. This is Prism’s core function, a way to visualize how Impact Values vary across a geographic area. You will also see your selected area supplemented with a numeric summary which is viewable in boxes that display to the right of the map.

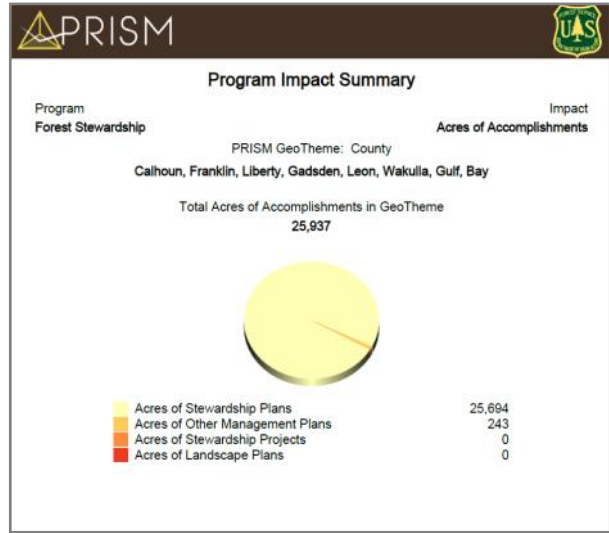


Prism (continued)

Users can print a summary report by clicking the “Print” icon in the upper-right hand corner on any of Prism’s webpages. Each summary report is tailored to your selections and typically includes a Program Impact map and a National Breakdown of the total Impact value by all programs (Forest Stewardship Management Plans, ‘Other’ Management Plans, Projects, Landscape Plans and Landscape Restoration Projects).



For this example, the County GeoTheme was chosen here, and 8 counties in Northwest Florida were selected. Map features are selected by clicking and unclicking



The Program Impact Summary page shows which program area was selected (Forest Stewardship, the Impact selected (acres), GeoTheme selections (several Florida Counties), and a breakdown of management plans and Forest Stewardship related Projects.

PRISM Program Impact Breakdown

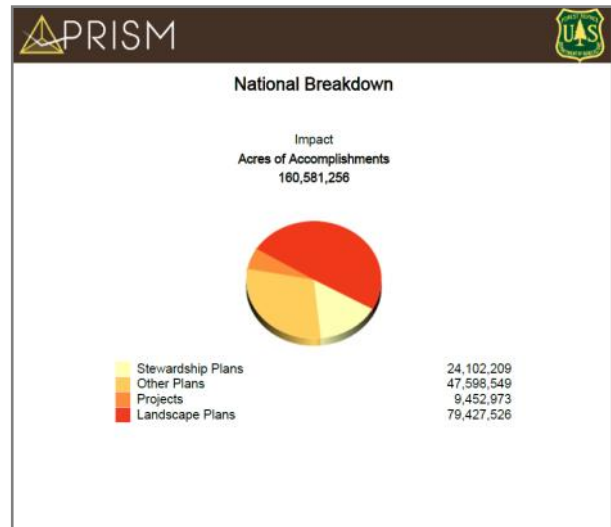
Program: Forest Stewardship
Impact: Acres of Accomplishments

PRISM GeoTheme: County
Calhoun, Franklin, Liberty, Gadsden, Leon, Wakulla, Gulf, Bay

Area Name	Stewardship Plans	Other Management Plans	Projects	Landscape Plans
Calhoun	2,466	0	0	0
Franklin	305	4	0	0
Liberty	2,204	0	0	0
Gadsden	12,453	66	0	0
Leon	3,631	173	0	0
Wakulla	2,742	0	0	0
Gulf	868	0	0	0
Bay	1,025	0	0	0

The table provides a detailed breakdown of accomplishments by county and management plan type. The PRISM and UAS logos are visible in the top corners.

The Program Impact Breakdown table shows each selected county and associated accomplishments.



Every Prism Impact Report ends with a national breakdown of impacts and associated accomplishments.

Prism can be found on the web at <https://apps.fs.usda.gov/prism/>. To find FAQs and more information about Prism, visit <https://www.formap.info>.

SMART Plan Implementation Monitoring

By Josh Baldwin

On December 3rd, Fiscal Year 2020 (FY20) plan implementation monitoring was initiated in SMART. After hearing feedback from states that wanted more time to prepare for and perform inspections, the Forest Service will now initiate plan selections as soon as possible after the end of the fiscal year. Here is an outline of what happens next:

- Forest Service Regional Forest Stewardship Program Managers will be notified and given a list of plans that have been selected for monitoring in their regions.
- Forest Stewardship Program Managers then notify Forest Stewardship State Coordinators and circulate the Forest Stewardship Plan Implementation Monitoring Guidance document.
- SMART State Administrators can then download their state's comprehensive report of flagged plans from the Implementation Monitoring page in SMART's Administration module. The report shows flagged plans for their state and their monitoring status. This cumulative report shows all current fiscal year and prior year plans chosen for monitoring. The report has the following fields: Plan ID, Plan Name, Preparer's Name, Monitoring Status, Date Flagged, State, and County.
- The default implementation status for Plans is "Not Monitored," but will change to either "Implemented" or "Not Implemented" as plans are checked off inside SMART. SMART Plan Preparers for the flagged plans and/or State Administrators can change the monitoring status in SMART. Directions for SMART State Administrators will be available in the forthcoming Guidance Document.
- Once the monitoring status changes, the content of the flagging report will change. We recommend downloading the state flagging report periodically to follow your state's progress.

Be on the lookout for the FY20 Plan Implementation Monitoring Guidance document which will go out to Regional Forest Service Forest Stewardship Program Managers in Mid-December.

USFS ForMAP Team Contact Information

Peter Bedker

USDA-FS Region 9
Office of Knowledge Management
ForMAP Project Team Leader
651-649-5030
pbedker@fs.fed.us

Tom Luther

USDA-FS Region 9
GIS Team Leader
603-868-7710
tluther@fs.fed.us

Josh Baldwin

ForMAP National Administrator &
Help Desk Associate
303-275-5341
jcbaldwin@fs.fed.us

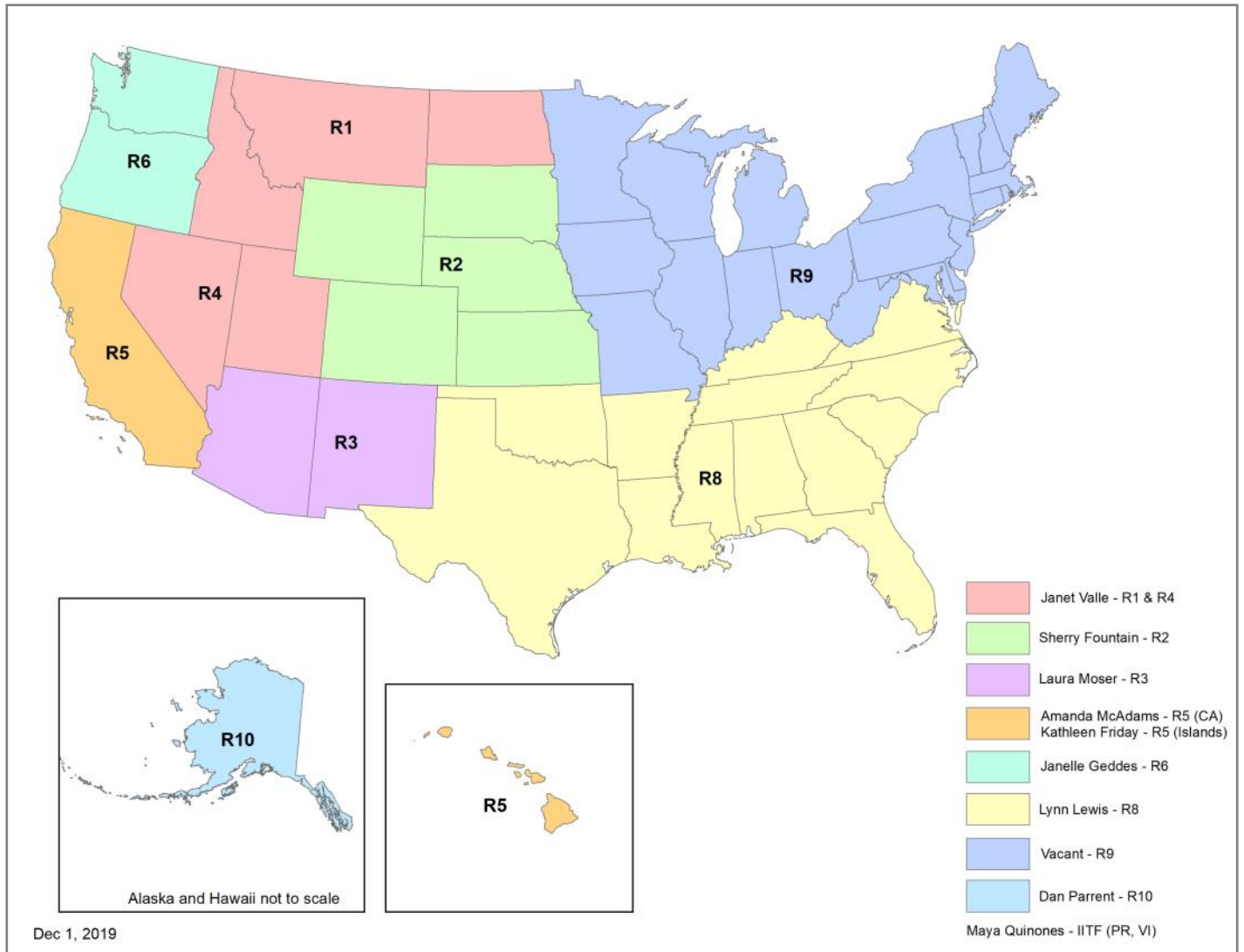
Arvind Bhuta

USDA-FS ForMAP Program Manager
202-205-1391
arvindabhuta@fs.fed.us

Kelli Groy

ForMAP National Administrator
& Help Desk Associate
303-275-5341
kgroy@fs.fed.us

Forest Stewardship Program Managers



U.S. Forest Service Forest Stewardship Regional Program Managers

Janet Valle
Regions 1 & 4
801-625-5258
jvalle@fs.fed.us

Laura Moser
Region 3
505-842-3887
lmoser@fs.fed.us

Kathleen Friday
Region 5 (Islands)
808-854-2620
kfriday@fs.fed.us

Lynn Lewis
Region 8
803-507-5681
lynnlewis@fs.fed.us

Dan Parrent
Region 10
907-743-9467
djparrent@fs.fed.us

Sherry Fountain
Region 2
303-275-5742
sherry.fountain@usda.gov

Amanda McAdams
Region 5 (CA)
530-233-8743
amanda.mcadams@usda.gov

Janelle Geddes
Region 6
503-808-2353
Janelle.geddes@usda.gov

Region 9 (Northeast Area)
Vacant

Maya Quiñones
IITF, PR, VI
787-764-7156
mquinones@fs.fed.us