

# ShapeUp User Guide



**A guide to using the ShapeUp conversion tools in ForMAP**

This User Guide was written by the ForMAP Help Desk Team. Please notify us if you have any questions.

- [www.formap.info](http://www.formap.info)
- 303-275-5341

## About ShapeUp

- The SMART ShapeUp Tool allows you to copy a GIS feature from a shapefile and paste it into the suite of ForMAP applications: SMART, LaSR, and ForHealth.
- Shapes can be pasted into any 'In Progress' Management Plan, Project, or Landscape Plan in SMART; into the Impact Area page in LaSR; and into the Treatment Area page in ForHealth.
- The ShapeUp tools can be used for Polygons, Lines, and Points.
- Only one shape can be pasted at a time; multi-part polygons are ok. \*Note – polygons must be merged into a single record in the shapefile.

## ShapeUp Tool Information

The SMART ShapeUp tools are available for download from the Supporting Software Page, accessed from the SMART home page – <https://apps.fs.usda.gov/formap/SMART/Home/Downloads>.

For the desktop version, please unzip the downloaded folder and open (double click) on the “SMARTShapeUp.exe” file. This will open the software. There is an information box in the lower left hand corner that explains what ShapeUp is and how to use it.

For the ArcMap add-in, a Help Document is provided in the ShapeUp download folder. This will lead you through the process of installing and using the tool.

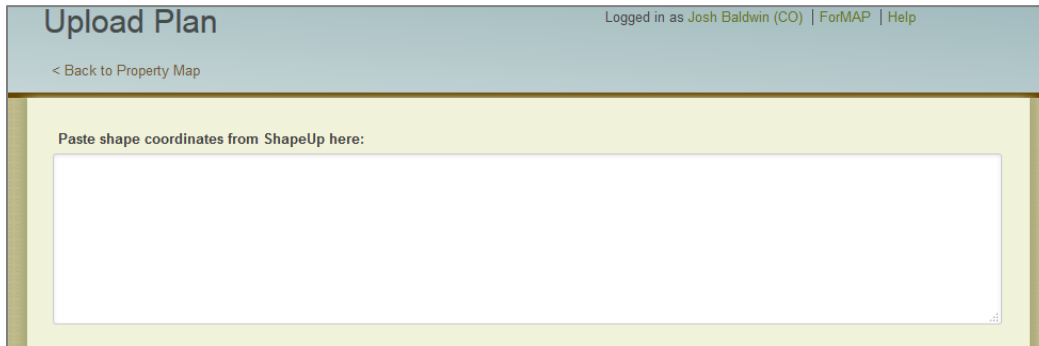
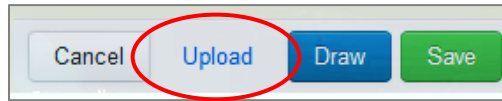
If additional assistance is needed please contact the ForMAP Help desk at 303-275-5341 or through the Help Desk website at [www.formap.info](http://www.formap.info).



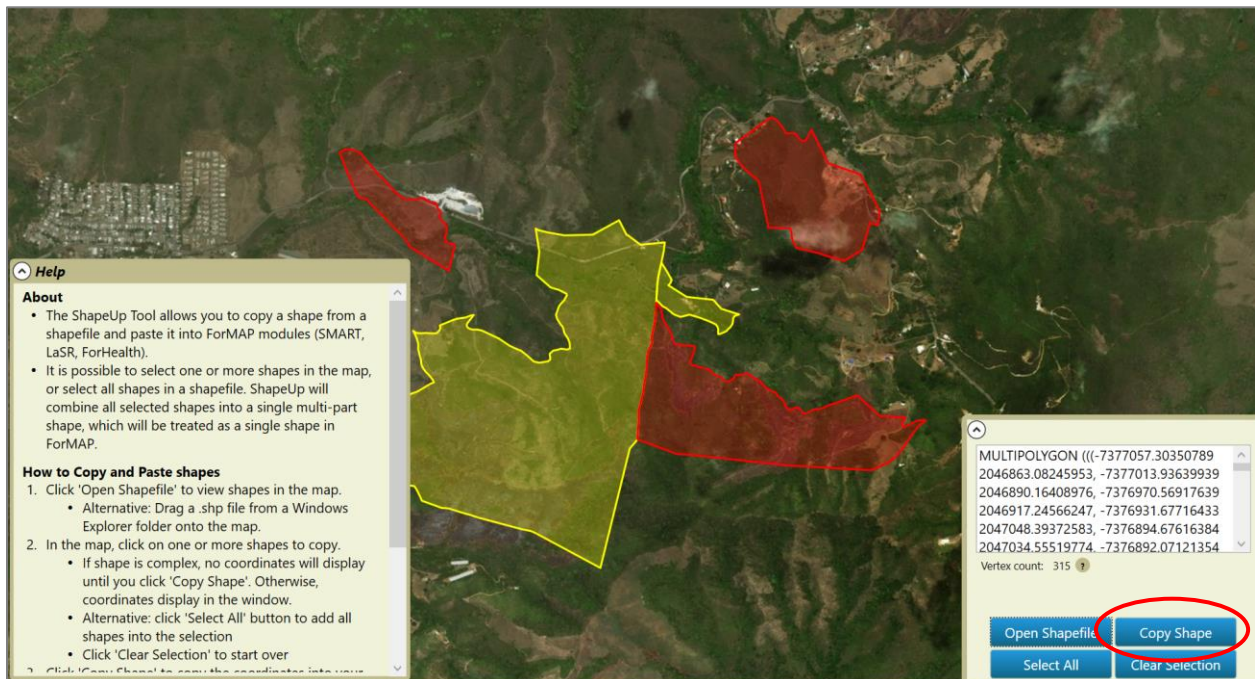
## How to use the ShapeUp tools in SMART

### A. ShapeUp desktop application

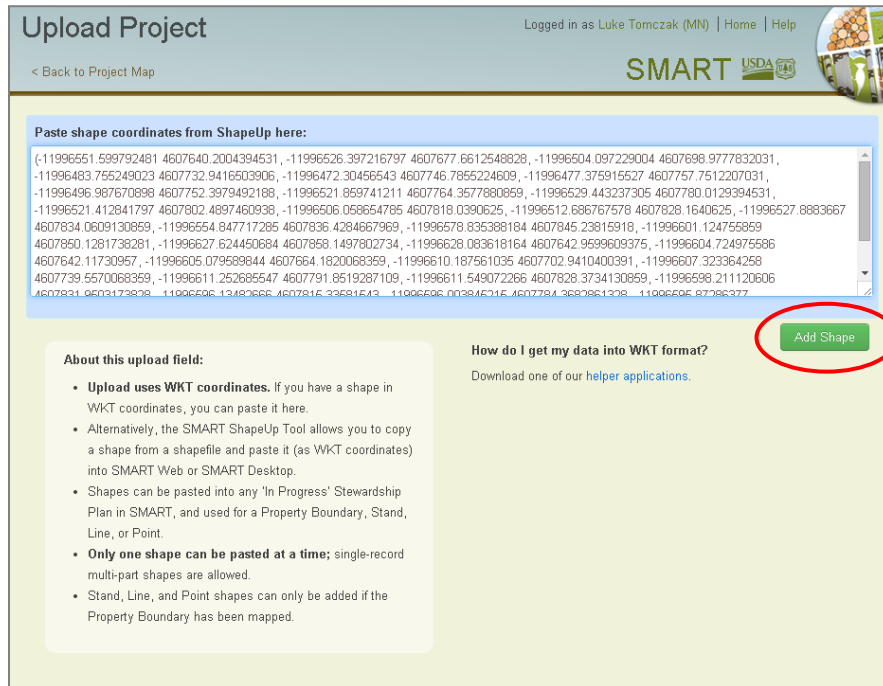
1. On the SMART Property Boundary page, click **Upload** from the SMART mapping toolbox; this will open the Upload Project page:



Open the ShapeUp desktop tool, click the upload shapefile button, navigate to the property boundary shapefile to be uploaded, and open it. Left-click on the feature or features of interest, and click **copy shape** in the coordinates window.



2. Navigate back to the SMART Upload page and paste the “WKT” coordinates (ctrl-V or right-click, paste) into the shapefile coordinates text box.
3. Click **Add Shape**.

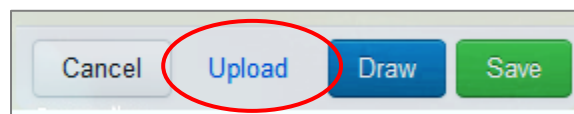


4. Click **save** in the mapping toolbox. This will commit the property boundary to your management plan.

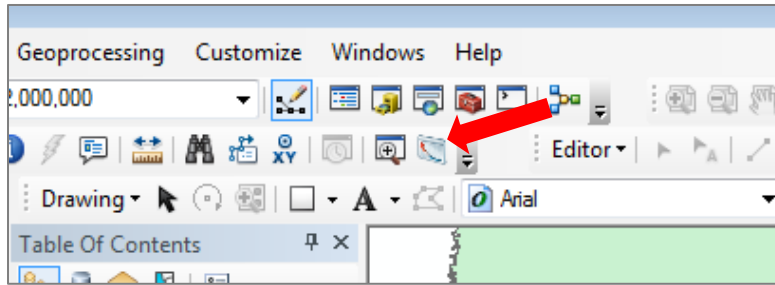
You can use the ShapeUp tools to add other GIS feature, such as lines, to your management plan using this same method.

### B. ShapeUp ArcMap add-in

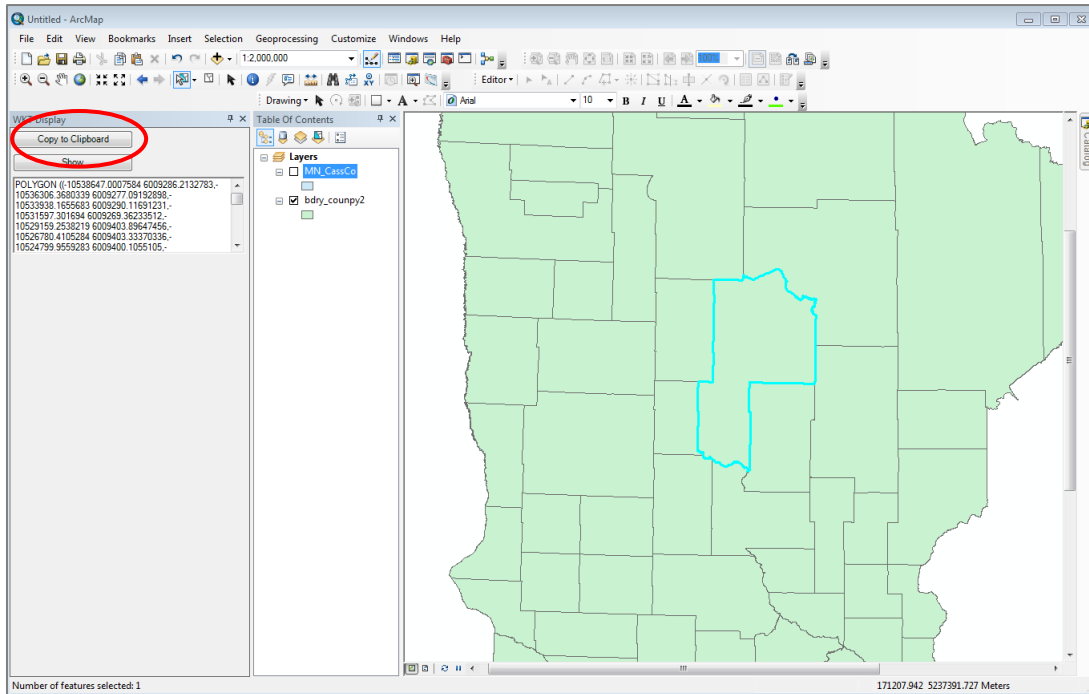
1. On the SMART Property Boundary page, click **Upload** from the SMART mapping toolbox; this will open the Upload Project page.



2. Open the ShapeUp ArcMap add-in tool by clicking on the **Selected Geometry to WKT** icon on your ArcMap toolbar. \*Installation instructions are available in the download folder.



3. Select the polygon of interest, and click **Copy to Clipboard**.



4. Navigate back to the SMART Upload page and paste the WKT coordinates (ctrl-V or right-click, paste) into the shapefile coordinates text box.

5. Click **Add Shape**.



### Paste shape coordinates from ShapeUp here:

```
(-11996551.599792481 4607640.2004394531, -11996526.397216797 4607677.6612548828, -11996504.097229004 4607698.9777832031,
-11996483.755249023 4607732.9416503906, -11996472.30456543 4607746.7855224609, -11996477.375915527 4607757.7512207031,
-11996496.987670898 4607752.3979492188, -11996521.859741211 4607764.3577880859, -11996529.443237305 4607780.0129394531,
-11996521.412841797 4607802.4897460938, -11996506.058654785 4607818.0390625, -11996512.686767578 4607828.1640625, -11996527.8883667
4607834.0609130859, -11996554.847717285 4607836.4284667969, -11996578.835388184 4607845.23815918, -11996601.124755859
4607850.1281738281, -11996627.624450684 4607858.1497802734, -11996628.083618164 4607642.9599609375, -11996604.724975586
4607642.11730957, -11996605.079589844 4607664.1820068359, -11996610.187561035 4607702.9410400391, -11996607.323364258
4607739.5570068359, -11996611.252685547 4607791.8519287109, -11996611.549072266 4607828.3734130859, -11996598.211120606
4607831.9603173828, -11996596.13482666 4607815.33581543, -11996596.003845215 4607784.3682861328, -11996595.87286377
```

#### About this upload field:

- **Upload uses WKT coordinates.** If you have a shape in WKT coordinates, you can paste it here.
- Alternatively, the SMART ShapeUp Tool allows you to copy a shape from a shapefile and paste it (as WKT coordinates) into SMART Web or SMART Desktop.
- Shapes can be pasted into any 'In Progress' Stewardship Plan in SMART, and used for a Property Boundary, Stand, Line, or Point.
- **Only one shape can be pasted at a time;** single-record multi-part shapes are allowed.
- Stand, Line, and Point shapes can only be added if the Property Boundary has been mapped.

#### How do I get my data into WKT format?

Download one of our [helper applications](#).

Add Shape

6. Click **save** in the SMART mapping toolbox. This will commit the property boundary to your management plan.

You can use the ShapeUp tools to add other GIS feature, such as points, to your management plan using this same method.