



USDA Forest Service Forest Stewardship Program

SMART

Stewardship Mapping and Reporting Tool



ShapeUp Add-In for ArcMap

Instruction Manual



Last updated February 2022



About ShapeUp Add-in for ArcMap

The ShapeUp Add-In for ArcMap is an add-in utility for the ESRI ArcGIS for Desktop software. It allows you to select and copy shapes from within ArcGIS into SMART for any Plan Property Boundary, Stand, Line, or Point. You can copy the geometry of a shape from any vector layer already in use on your local system (e.g. shapefile, coverage, SDE, GDB, pGDB), thus saving you data-preparation time.

If you have any difficulty installing or using the ShapeUp tool, please notify the SMART Help Desk:

- www.formap.info
- support@formap.info
- SM.FS.formap@usda.gov
- 303-275-5341

Step 1: If you do not already have a copy of the Add-In, log into SMART using your USDA eAuthentication account. Follow steps 2-4. If you already have the file, begin at Step 5.

Step 2: On the bottom of your HOME page, click the [Download supporting software](#) link.





SMART



Step 3: Click the *Get the ShapeUp Add-In* button.

SMART Desktop
The SMART Desktop program is intended for foresters that do not have a reliable enough internet connection to use SMART Web. SMART Desktop allows you to create stewardship plans and upload the Plan data to SMART Web when you have a sufficient internet connection. Please note that all active Stewardship Plans must be uploaded from Desktop to Web for federal reporting requirements.
[Get SMART Desktop](#)

ShapeUp
Use ShapeUp to visualize your Shapefile files and copy them into SMART for any mapped object.
[Get ShapeUp](#)

SADL Tool
The Stewardship Accomplishment Data Loader (SADL) tool allows State Administrators to upload multiple stewardship plans in Shapefile format, with minimum required attribution. This should be used for Forest Stewardship Plans not by other means.
[Get the SADL Tool](#)

ShapeUp Add-In for ArcMap
The ShapeUp Add-In for ArcMap is an add-in tool for the ESRI ArcGIS for Desktop software, and will allow you to select and copy shapes from within ArcGIS into SMART for any mapped object.
[Get the ShapeUp Add-In](#)

Step 3: Click "Get the ShapeUp Add-In"

Step 4: Download File to your Desktop

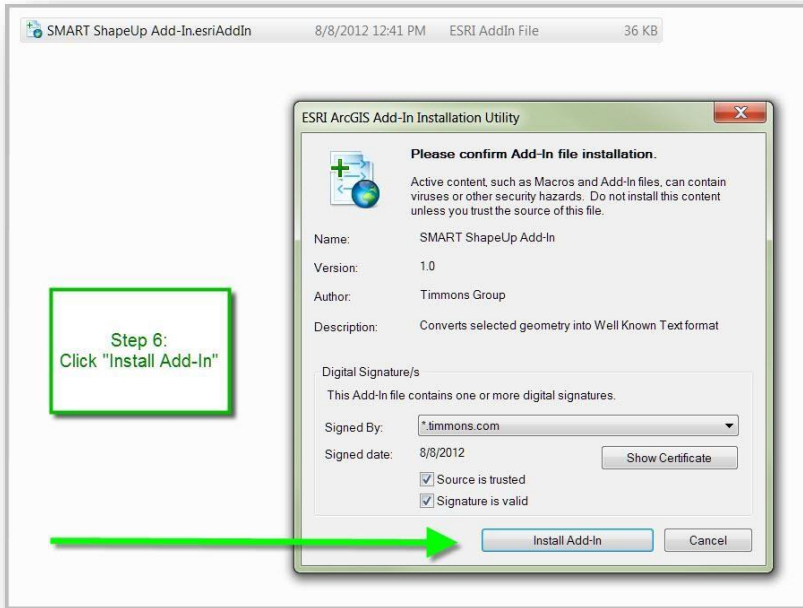
Step 4: The zip file downloads to your desktop computer.

Step 5: After the download has completed, unzip the folder, and double-click *ShapeUp Add-In.esriAddIn*. In order for the installation to be successful, ArcGIS must not be open.

Step 6: Click the *Install Add-in* button and wait for installation to finish.



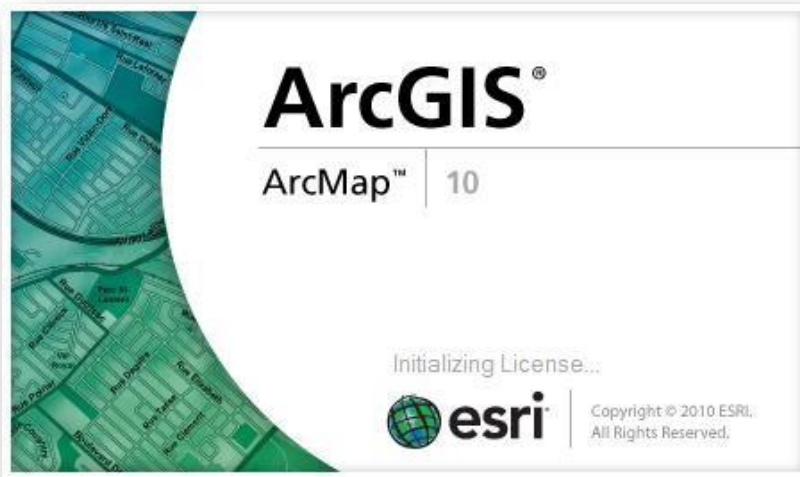
USDA Forest Service Forest Stewardship Program
SMART
Stewardship Mapping and Reporting Tool



Step 7: Open ArcMap on your computer.



SMART



Step 8: On the ArcMap menu bar:

- Click **Customize**, then **Customize Mode** (or right-click anywhere in the header and scroll to **Customize** at the bottom of the list).
- Click the **Commands** tab.
- Scroll down the **Categories** column and click on **ShapeUp Add-In**, or in the search field enter **WKT**.
- The **Selected Geometry to WKT** Tool will be listed in the **Commands** pane. Drag-and-drop it into any toolbar in the header.
- Click the **Close** button to exit **Customize** window.



USDA Forest Service Forest Stewardship Program
SMART
Stewardship Mapping and Reporting Tool

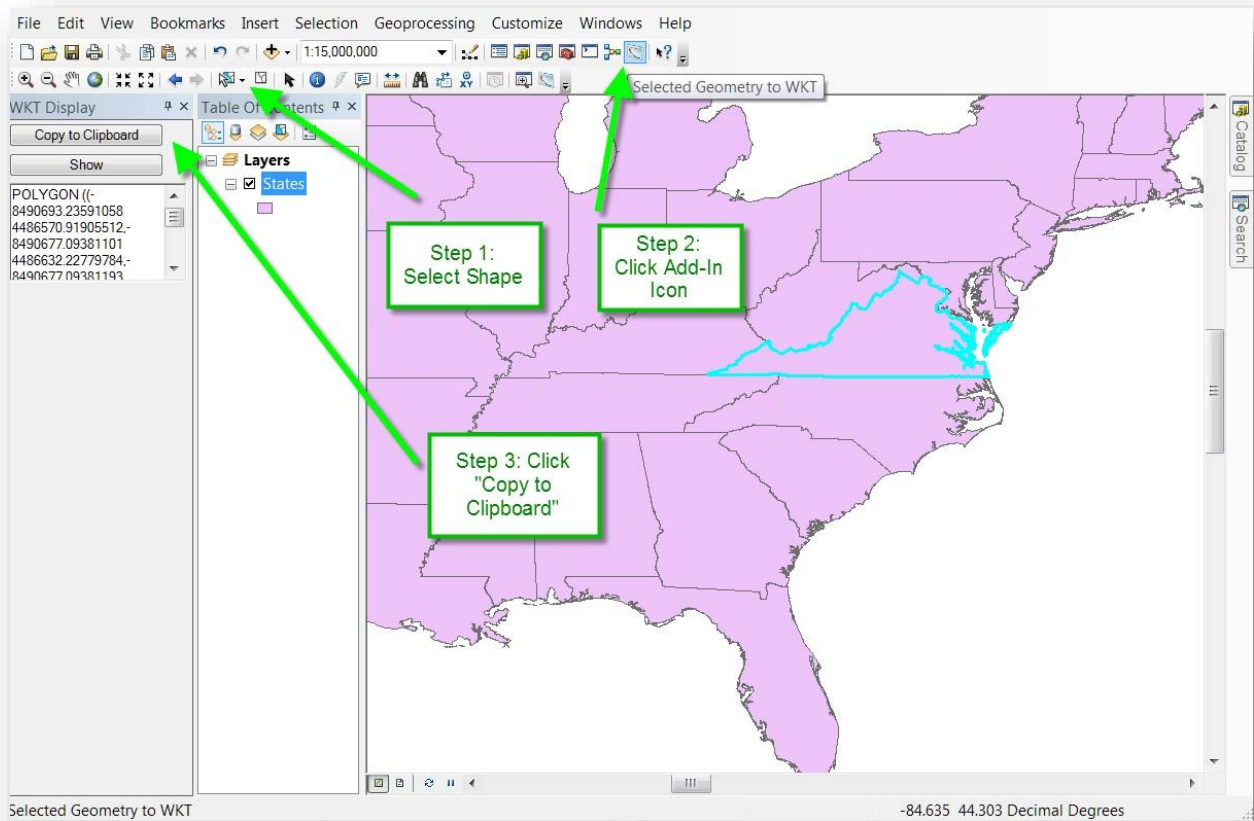


The screenshot shows the ArcMap interface with the 'Customize' dialog box open. The 'Commands' tab is selected, and the search field contains the letter 'S'. The 'SMART ShapeUp Add-In Tool' is highlighted in the 'Categories' list. Four green callout boxes provide instructions: 1. Click Customize (pointing to the 'Customize' menu item in the top toolbar), 2. Click Commands tab (pointing to the 'Commands' tab in the dialog), 3. Locate SMART ShapeUp Add-In Tool by scrolling down the list or using the search field. (pointing to the search field and the highlighted tool name), and 4. Click, drag and drop into anywhere in header. Then close custom window. (pointing to the 'Selected Geometry to WKT' command in the 'Commands' list).



Step 9: Using your preferred method, add a vector layer to your ArcMap Table of Contents.

- Click the **Select Features** icon.
- Select a Point, Line or Polygon to copy into SMART. The selected area will highlight.
- Click the SMART ShapeUp **Add-In Tool** icon. A dockable window (WKT Display) will open to display the coordinates of the selected shape(s).



Step 10: Copying coordinates of a single shape.

If you have selected more than one shape, a specific geometry will flash by clicking the **Show** button. You can also keep selecting geometry and the window will update accordingly.

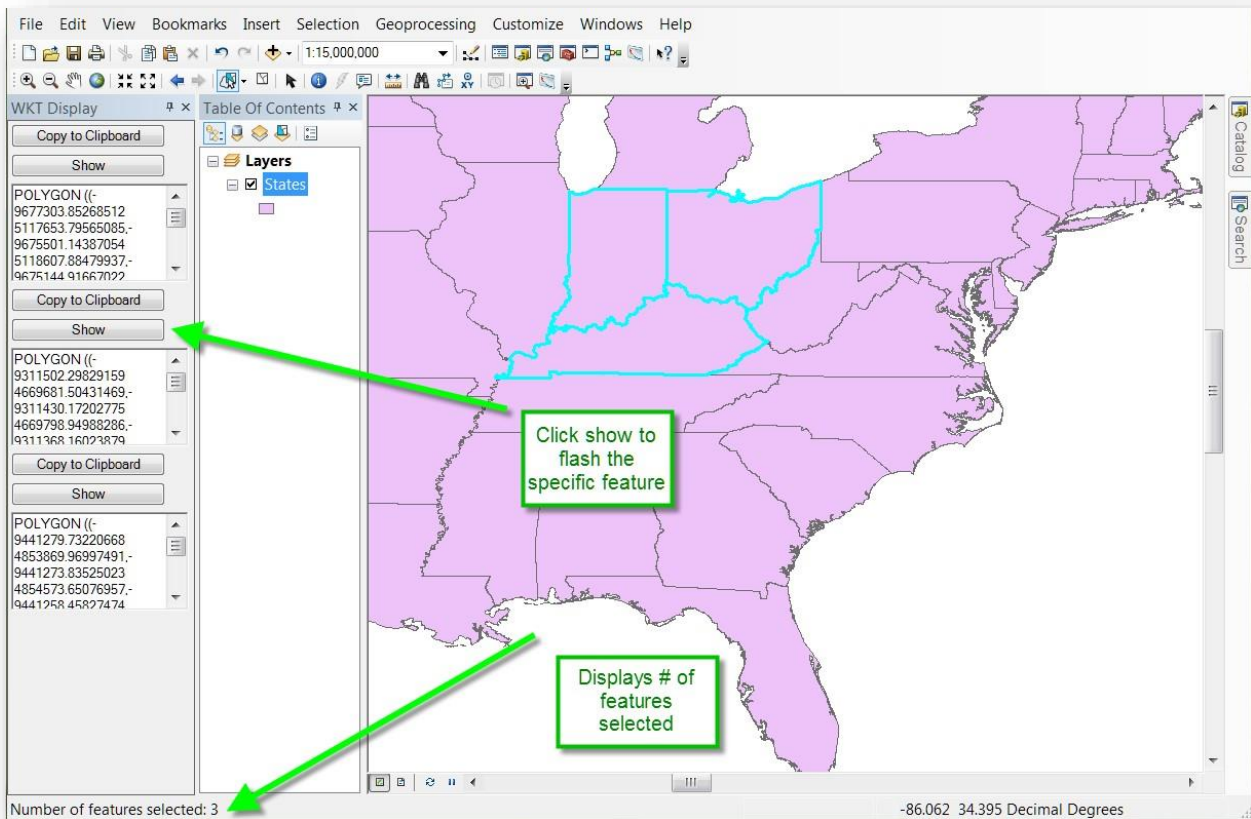


SMART



- Click **Copy to Clipboard**. This copies the coordinates of a single shape to system clipboard.

***Note:** Multi-part polygons are supported by the tool. If the shapes are listed as separate records in the attribute table, they will need to be merged as a multi-part polygon before use in ShapeUp.



Step 11: In the SMART application:

- Click **Upload**.
- In the textbox, right-click to **Paste Clipboard** coordinates in window. *Only input the coordinates of one shape.
- Click **Add Shape**.



SMART



SMART Desktop 1.0.0.1

Paste ShapeUp Add-In Coordinates In Progress Home | Exit

General Information Details **Property Boundary**

Confirm Upload Shape

Use ShapeUp

1. Start the ShapeUp tool on your computer
2. Add a Shapefile to the Map (instructions are in ShapeUp)
3. Click on the desired shape in the map
4. Click Copy
5. Switch to SMART and return to this Upload page
6. Right-click in the window below and select Paste
7. Click Add Shape button
8. Enter a Name and click Save

Paste one shape below

```

43/6623.31484036,-8455527.95140623
4376609.46979962,-8455549.99050743
4376609.46979875,-8455606.08664531 4376623.31483554),
(-8490754.35196142 4486561.67113402,-8490693.23591058
4486570.91905512,-8490764.37312733
4486553.26820956,-8490754.35196142 4486561.67113402),
(-8509818.37778772 4437653.4682645,-8509811.69701086
4437669.07501779,-8509802.79552735
4437653.46826513,-8509818.37778772 4437653.4682645))

```

Paste ShapeUp Add-In Coordinates

9/5/2012 No shape(s)
Created On GIS Acres

Stewardship Mapping and Reporting Tool Powered by Timmons Group



SMART

Stewardship Mapping and Reporting Tool



Upload Stewardship Plan Logged in as Dalai Lama (VA) | Home | Help

< Back to Property Map SMART USDA

Paste shape coordinates from ShapeUp here:

```
4503265.01037774,-8488893.53217357 4503232.89682195,-8488896.08877894 4503110.90851972,-8488925.03259408
4503104.44357775,-8488979.3559 4503117.34995211,-8488988.14541389 4503101.64602018,(-8458522.65657498
4376623.31472068,-8455606.08664531 4376623.31483554,-8456185.29885727 4376609.46977374,-8458522.65657498 4376623.31472068),
(-8497384.98737166 4512212.65516344,-8497344.79074656 4512412.96209381,-8497270.66771038 4512501.38730727,-8497384.98737166
4512212.65516344),(-8455606.08664531 4376623.31483554,-8455483.76123604 4376623.31484036,-845527.95140623
4376609.46979952,-8455549.99050743 4376609.46979975,-8455606.08664531 4376623.31483554),(-8490754.35196142
4486561.67113402,-8490693.23591058 4486570.91905512,-8490764.37312793 4486553.26820956,-8490754.35196142 4486561.67113402),
(-8509818.37778772 4437653.4682645,-8509811.69701086 4437669.07501779,-8509802.79522735 4437653.46826513,-8509818.37778772
4437653.4682645))
```

About this upload field:

- Upload uses WKT coordinates. If you have a shape in WKT coordinates, you can paste it here.
- Alternatively, the SMART ShapeUp Tool allows you to copy a shape from a shapefile and paste it (as WKT coordinates) into SMART Web or SMART Desktop.
- Shapes can be pasted into any 'In Progress' Stewardship Plan in SMART, and used for a Property Boundary, Stand, Line, or Point.
- Only one shape can be pasted at a time; single-record multi-part shapes are allowed.
- Stand, Line, and Point shapes can only be added if the Property Boundary has been mapped.

How do I get my data into WKT format?
 Download one of our [helper applications](#).

SMART web application view

Add Shape

Step 12: In the SMART application:

- Click **Save** to keep, or delete to remove.

SMART Desktop 1.0.0.1

Paste ShapeUp Add-In Coordinates In Progress Home | Exit

General Information Details **Property Boundary** Stands Lines Points SMART USDA

Paste ShapeUp Add-In Coordinates
 Created On: 9/5/2012
 GIS Act: 40759239...

Add Activity
 Cancel Draw **Save** Delete

Stewardship Mapping and Reporting Tool Powered by Timmons Group