



USDA Forest Service Forest Stewardship Program

SMART

Stewardship Mapping and Reporting Tool



ShapeUp Add-In for ArcGIS Pro

Instruction Manual



SMART

Stewardship Mapping and Reporting Tool



Last updated February 2022

About ShapeUp Add-in for ArcGIS Pro

The ShapeUp Add-In for ArcGIS Pro is an add-in utility for the ESRI ArcGIS Pro software. It allows you to select and copy shapes from within ArcGIS Pro into SMART for any Plan Property Boundary, Stand, Line, or Point. You can copy the geometry of a shape from any vector layer already in use on your local system (e.g. shapefile, coverage, SDE, GDB, pGDB), thus saving you data-preparation time.

If you have any difficulty installing or using the ShapeUp tool, please notify the SMART Help Desk:

- 303-275-5341
- support@formap.info

Step 1: If you do not already have a copy of the Add-In, log into SMART using your USDA eAuthentication account. Follow steps 2-4. If you already have the file, begin at Step 5.

Step 2: On the bottom of your SMART Home Page, click the [Download supporting software](#) link.



Step 3: Click the [Get the ArcGIS Pro ShapeUp Add-In](#) button.



SMART

Stewardship Mapping and Reporting Tool



SMART Desktop

The SMART Desktop program is intended for foresters that do not have a reliable enough internet connection to use SMART Web. SMART Desktop allows you to create stewardship plans and upload the Plan data to SMART Web when you have a sufficient internet connection. Please note that all active Stewardship Plans must be uploaded from Desktop to Web for federal reporting requirements.

[Get SMART Desktop](#)

ShapeUp

Use ShapeUp to visualize your Shapefile files and copy them into SMART for any mapped object.

[Get ShapeUp](#)

SADL Tool

The Stewardship Accomplishment Data Loader (SADL) tool allows State Administrators to upload multiple stewardship plans in Shapefile format, with minimum required attribution. This should be used for Forest Stewardship Plans not by other means.

[Get the SADL Tool](#)

ShapeUp Add-In for ArcMap

The ShapeUp Add-In for ArcMap is an add-in tool for the ESRI ArcGIS for Desktop software, and will allow you to select and copy shapes from within ArcGIS into SMART for any mapped object.

[Get the ShapeUp Add-In](#)

Step 3:
Click "Get the ShapeUp Add-In"

Step 4:
Download File to your Desktop

Step 4: The zip file downloads to your desktop computer.

Step 5: After the download has completed, unzip the folder, and double-click [ShapeUp Add-In.esriAddInX](#).

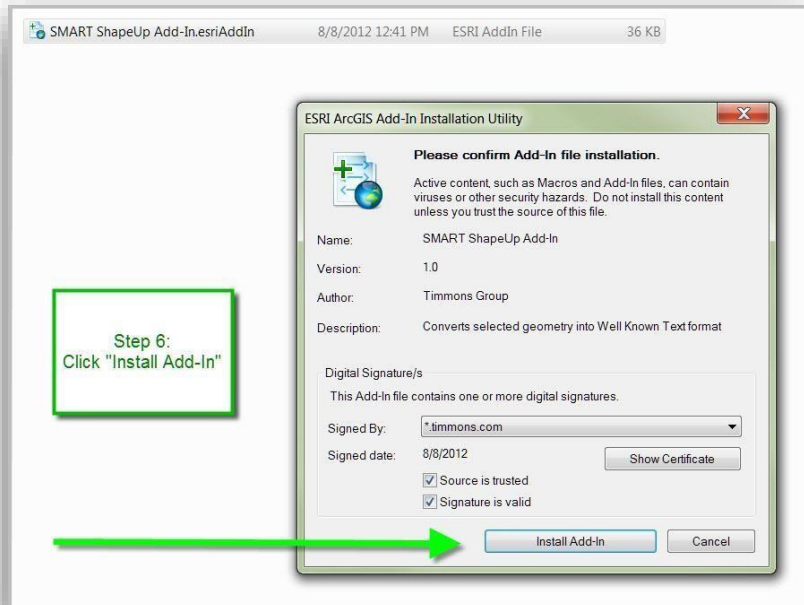


SMART

Stewardship Mapping and Reporting Tool



Step 6: Click the *Install Add-in* button and wait for installation to finish.



Step 7: Open ArcGIS Pro on your computer.



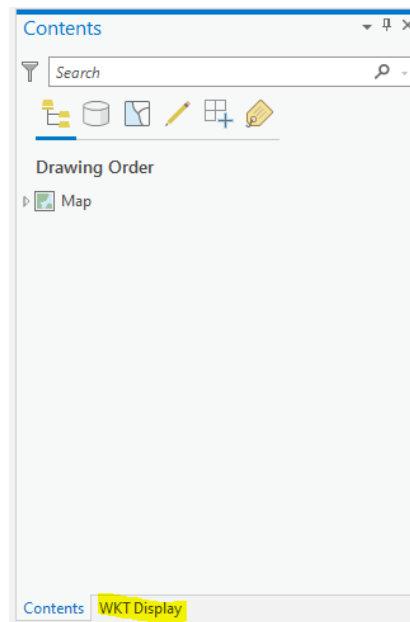
SMART

Stewardship Mapping and Reporting Tool



Step 8: On the ArcGIS Pro menu bar:

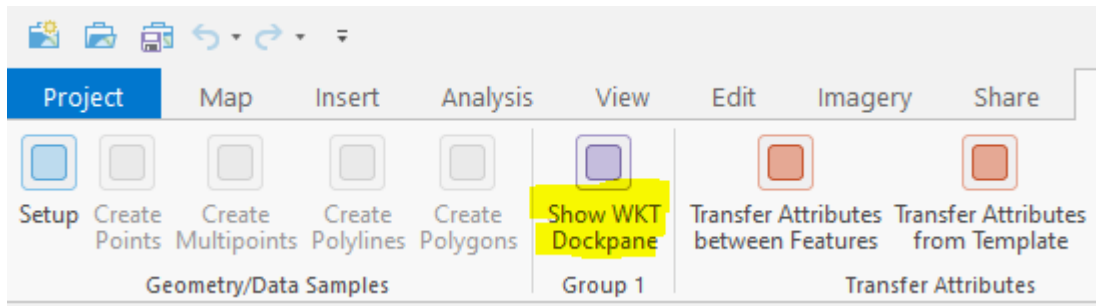
- If you can already see a tab named “WKT Display” on the Contents window, proceed to the next step.
- Click **Add-In**, then **Show WKT Dockpane**.





SMART

Stewardship Mapping and Reporting Tool



Step 9: Using your preferred method, add a vector layer to your ArcGIS Pro Table of Contents.

Click the [Select Features](#) icon.

- Select a Point, Line or Polygon to copy into SMART. The selected area will highlight.
- A dockable window (WKT Display) should already be open to display the coordinates of the selected shape(s).

Step 10: Copying coordinates of a single shape.

If you have selected more than one shape, a specific geometry will flash by clicking the [Flash](#) button. You can also keep selecting geometry and the window will update accordingly.

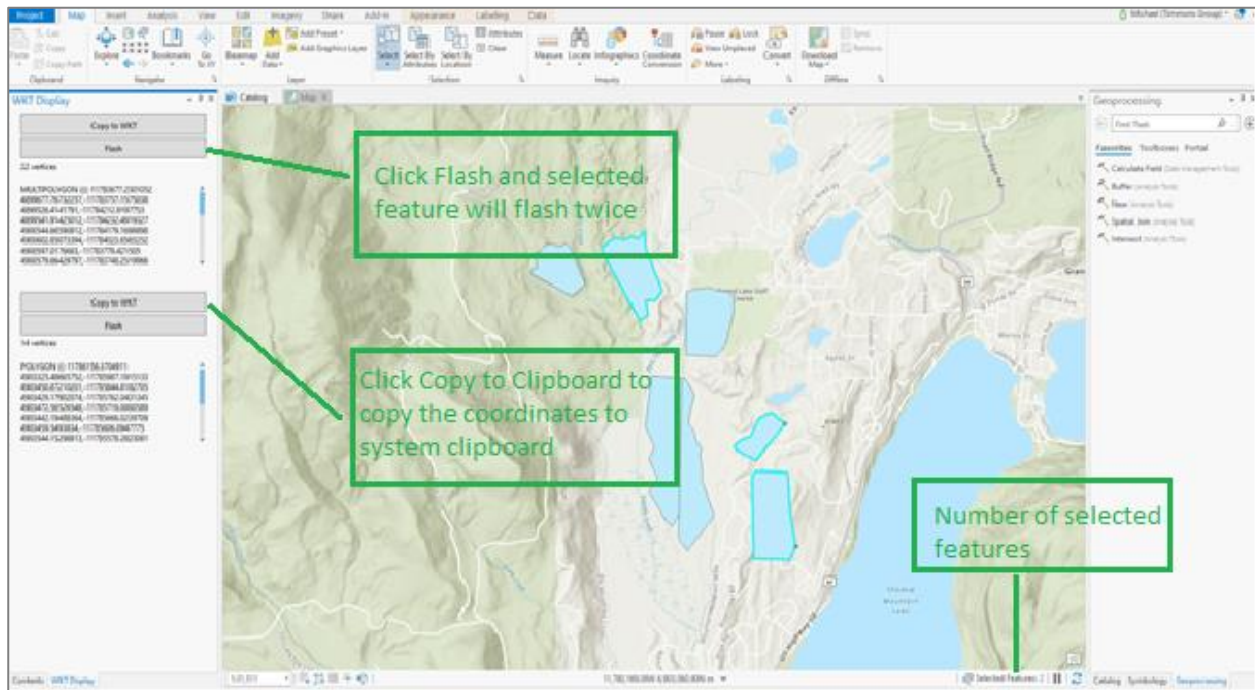
- Click [Copy to Clipboard](#). This copies the coordinates of a single shape to system clipboard.

***Note:** Multi-part polygons *are* supported by the tool. If the shapes are listed as separate records in the attribute table, they will need to be merged as a multi-part polygon before use in ShapeUp.



SMART

Stewardship Mapping and Reporting Tool



Step 11: In the SMART application:

Click **Upload**.

- In the textbox, right-click to **Paste Clipboard** coordinates in window. *Only input the coordinates of one shape. Click **Add Shape**.



SMART

Stewardship Mapping and Reporting Tool



SMART Desktop 1.0.0.1

Paste ShapeUp Add-In Coordinates

In Progress Home | Exit

General Information Details **Property Boundary**

Confirm Upload Shape

Use ShapeUp

1. Start the ShapeUp tool on your computer
2. Add a Shapefile to the Map (instructions are in ShapeUp)
3. Click on the desired shape in the map
4. Click Copy
5. Switch to SMART and return to this Upload page
6. Right-click in the window below and select Paste
7. Click Add Shape button
8. Enter a Name and click Save

Paste one shape below

```
4376623.31484036,-8455527.95140623
4376609.46979962,-8455549.99050743
4376609.46979875,-8455606.08664531 4376623.31483554),
(-8490754.35196142 4486561.67113402,-8490693.23591058
4486570.91905512,-8490764.37312733
4486553.26820956,-8490754.35196142 4486561.67113402),
(-8509818.37778772 4437653.4682645,-8509811.69701086
4437669.07501779,-8509802.79552735
4437653.46826513,-8509818.37778772 4437653.4682645))
```

Step 3: Click "Add Shape"

Add Shape **Cancel**

Step 1: Click Upload

Step 2: Right Click and Paste

Paste ShapeUp Add-In Coordinates

9/5/2012 Created On No shape(s) GIS Acres

Cancel **Draw** **Save** **Upload**

wardship Mapping and Reporting Tool Powered by Timmons Group



USDA Forest Service Forest Stewardship Program

SMART

Stewardship Mapping and Reporting Tool



Upload Stewardship Plan

Logged in as Dalai Lama (VA) | Home | Help

< Back to Property Map

SMART

Paste shape coordinates from ShapeUp here:

```
4503265 01037774,-6488893 53217357 4503232 80662195,-6488896 08877894 4503110 90851972,-6488925 03250408
4503104 44357775,-6488879 3559 4503117 34995211,-6488888 14541389 4503101 64602018),(6458522 65657498
4376623 31472069,-6455606 08664531 4376623 31483554,-6456185 29885727 4376609 46977374,-6458522 65657498 4376623 31472068),
(-6497384 98737166 4512212 65516344,-8497344 79074656 4512412 96209381,-8497270 66771038 4512501 38730727,-8497384 98737166
4512212 65516344),(-8455606 08664531 4376623 31483554,-8455483 76123604 4376623 31484036,-8455527 95140623
4376609 46979962,-8455549 99050743 4376609 46979875,-8455606 08664531 4376623 31483554),(-8490754 35196142
4486561 67113402,-8490693 23591058 4486570 91905512,-8490764 37312733 4486553 26520956,-8490754 35196142 4486561 67113402),
(-8509818 37778772 4437653 4682645,-8509811 69701086 4437669 07901779,-8509802 79552736 4437653 46826513,-8509818 37778772
4437653 4682645))
```

About this upload field:

- Upload uses WKT coordinates. If you have a shape in WKT coordinates, you can paste it here.
- Alternatively, the SMART ShapeUp Tool allows you to copy a shape from a shapefile and paste it (as WKT coordinates) into SMART Web or SMART Desktop.
- Shapes can be pasted into any 'In Progress' Stewardship Plan in SMART, and used for a Property Boundary, Stand, Line, or Point.
- Only one shape can be pasted at a time; single-record multi-part shapes are allowed.
- Stand, Line, and Point shapes can only be added if the Property Boundary has been mapped.

How do I get my data into WKT format?

Download one of our [helper applications](#).

Add Shape

SMART web application view

Step 12: In the SMART application: click **Save** to keep, or **Delete** to remove.

SMART Desktop 1.0.0.1

Paste ShapeUp Add-In Coordinates

In Progress

Home | Exit

General Information Details Property Boundary Stands Lines Points

SMART

Click Save

Paste ShapeUp Add-In Coordinates

9/5/2012 40759209...

Created On GIS Activity

Add Activity

Cancel Draw Save Delete