



United States Department of Agriculture
Forest Service
State, Private, & Tribal Forestry
Cooperative Forestry, Landowner Assistance

ArcGIS Survey123 Forest Stewardship Program Plan Implementation Monitoring for FY2024 User's Guide

February 21, 2024

Contents

Introduction	2
Technical Support Contacts:	2
Acknowledgements:	2
Accessing the Stewardship Monitoring Survey123 Form from your computer	3
Accessing the Stewardship Monitoring Survey Form from your mobile device	5
Viewing, editing, and downloading Stewardship Monitoring Survey Results	7

Introduction

The Forest Service’s Forest Stewardship Program uses Esri’s ArcGIS Survey123 application to better collaborate with our State and Territorial partners in reporting Stewardship Plan Implementation Monitoring data for the FY2024 monitoring season. This reporting builds upon prior year surveys (FY2022 and FY2023) with no new updates to the form, but new updates on plans to be monitored. To report data through this survey, the required user must have a US Forest Service ArcGIS Online (AGOL) account (username and password) that has been assigned to you by a Forest Stewardship Program Regional Coordinator. Please ensure you have the correct login credentials to access the application. This form was developed by Robert J Geitner (robert.geitner@usda.gov) and for FY2022 and FY2023 was administered by Tom Luther (now retired). For responses or questions for this FY2024 Survey123 form, please contact Arvind Bhuta (arvind.a.bhuta@usda.gov). For Forest Stewardship Program questions please reach out to Caroline Kuebler (caroline.kuebler@usda.gov).

Technical Support Contacts:

Arvind Bhuta	Josh Baldwin
USDA – FS State & Private Forestry	(ForMap Help Desk)
Cooperative Forestry, Landowner’s Assistance	Phone: 303-275-5341
Email: arvind.a.bhuta@usda.gov	Email: support@formap.kayak.com

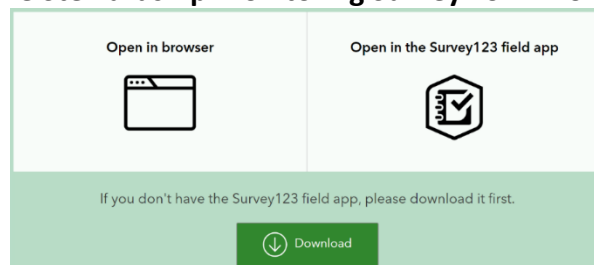
Acknowledgements: Robert J. Geitner, GIS Specialist, Eastern Region (R9) developed this Survey123 form in collaboration with Thomas Luther, GIS Specialist (retired), Eastern Region (R9).

Accessing the Stewardship Monitoring Survey123 Form from your computer

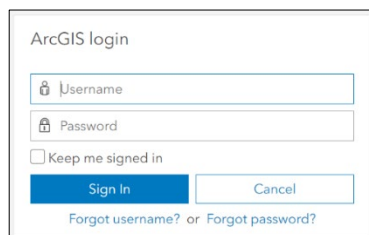
- 1) Click the <https://arcg.is/Oiyfyr> or scan the QR code below.



- 2) Data collection is supported via two options “**Open in Browser**” which requires an internet connection or “**Open in the Survey123 field app**” which supports both connected and disconnected data collection. If your mobile device does not have the Survey123 field app, please download, install, and then open the field app. If using a browser continue with the following steps. If you open Survey123 on a mobile device, please continue to the next section: “**Accessing the Stewardship Monitoring Survey Form from your mobile device.**”



- 3) Login to the US Forest Service ArcGIS Online (AGOL) enterprise account using the Username and Password provided by your Forest Service Stewardship Program Regional Coordinator. Logging in for the first time? You will be required to change passwords and create a security question/answer.



ArcGIS login

Username

Password

Keep me signed in

Sign In Cancel

[Forgot username?](#) or [Forgot password?](#)

Username: **spf_xx_partner**

Password: ********* (case sensitive)

- 4) Fill out the form sequentially (top to bottom) as answers to some questions filter subsequent questions and choices. Note that an * indicates a required field.

Forest Stewardship Program Monitoring Form FY24

Description:
A Survey123 form for Forest Stewardship Program Plan Implementation Monitoring.
* indicates required field.
Don't click the checkmark until you are done filling in the survey.

Part 1) Basic Info ▼

State*
Select the state where the property is located.

Plan ID*
Enter the state established unique identifier number for the plan.

Was the monitoring of this plan able to be completed?*

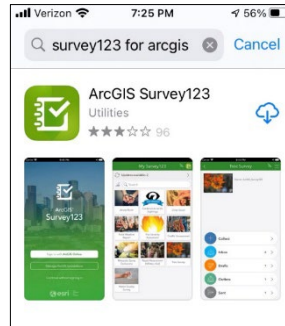
Yes

No

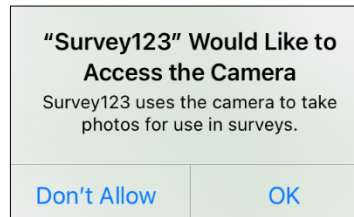
5) Submit the completed form.

Accessing the Stewardship Monitoring Survey Form from your mobile device

- 1) Search and download **ArcGIS Survey123** to your mobile device through the App Store (iOS) or Google Play (Android). The app is free, but you must be connected to the internet via wireless or cellular to download it.



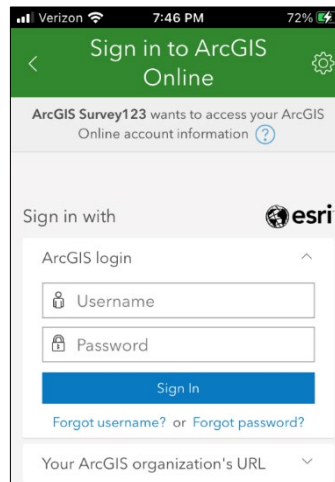
- 2) Open the ArcGIS Survey123 app and allow the app access to your mobile device's camera. For location, allowing access to your mobile device's location is not necessary for Stewardship Monitoring, but it will avoid annoying pop-ups.



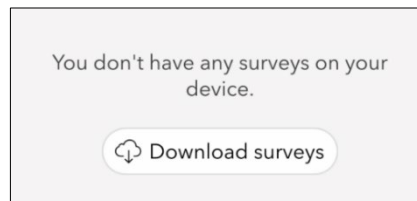
- 3) Click "Sign in with ArcGIS Online" and enter the Username and Password provided by your Forest Service Stewardship Program Regional Coordinator. If you are logging in for the first time, you will be required to change passwords and create a security question/answer.

Username: **spf_xx_partner**

Password: ********* (case sensitive)



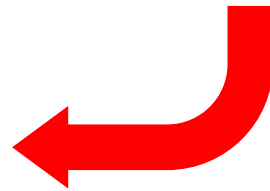
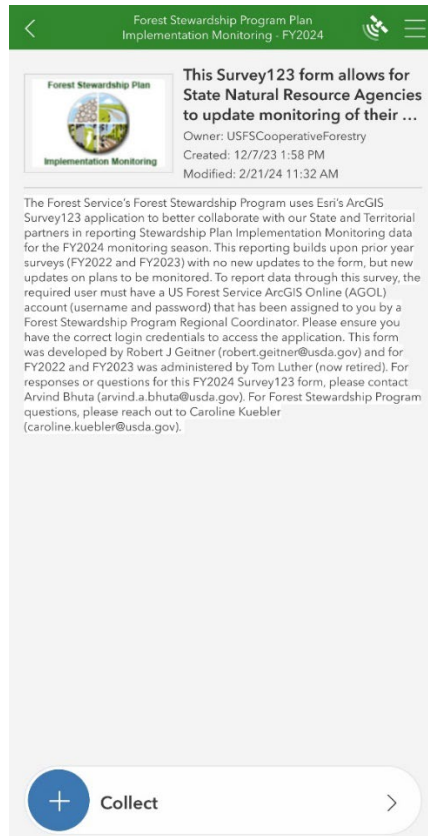
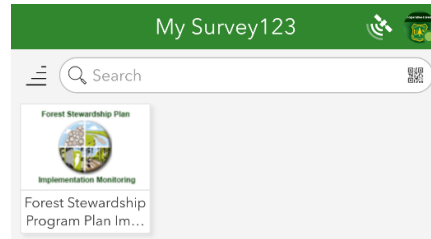
- 4) Click "Download surveys" to download the "FSP Plan Implementation Monitoring" survey form to your device for off-line use.



- 5) Enter "Stewardship" in the search window and look for the survey titled "Forest Stewardship Program Plan Implementation Monitoring – FY2024." Download the survey and then click the back arrow in the upper left corner to return the surveys page.



- 6) On the surveys page, click the "Forest Stewardship Program Plan Implementation Monitoring – FY2024" icon then select "Collect" to begin the survey.



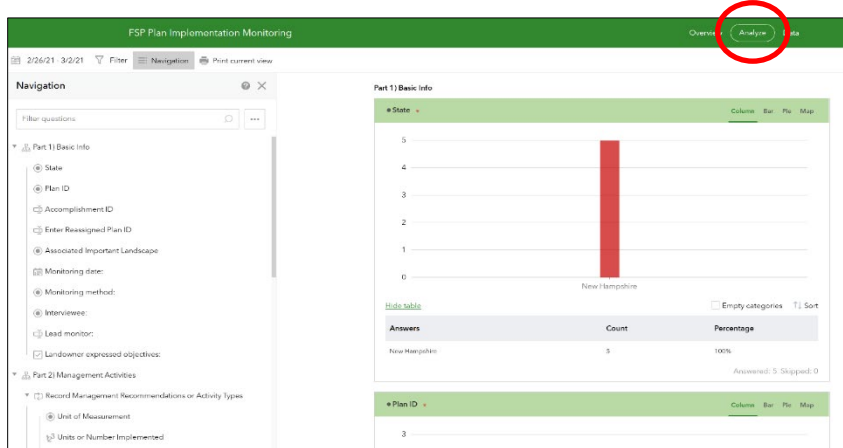
- 7) Click the check mark to submit the survey.

Viewing, editing, and downloading Forest Stewardship Monitoring Survey Results

- 1) Click the link to access the results pages of the Forest Stewardship Monitoring Survey at <https://arcg.is/15Knai>.
- 2) If necessary, login to the US Forest Service ArcGIS Online enterprise account using your USFS AGOL partner Username and Password.

Username: **spf_xx_partner**
 Password: ********* (case sensitive)

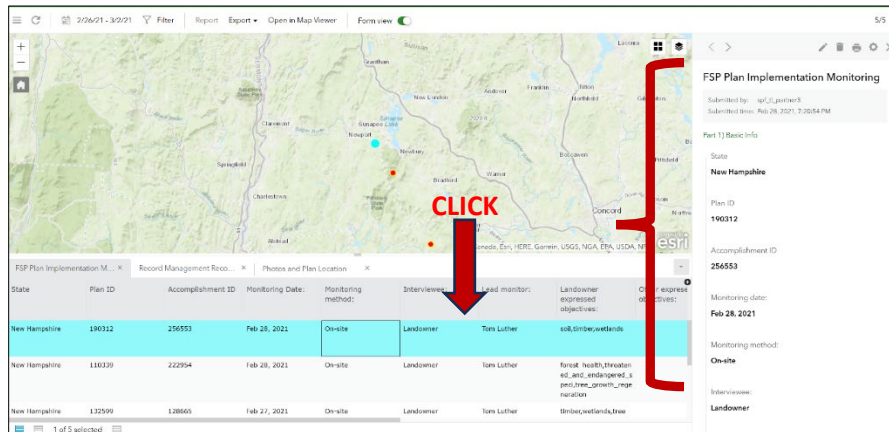
- 3) Explore your state's survey results from the "Analyze" tab of the results page. Filter data, and generate summary charts and graphs:



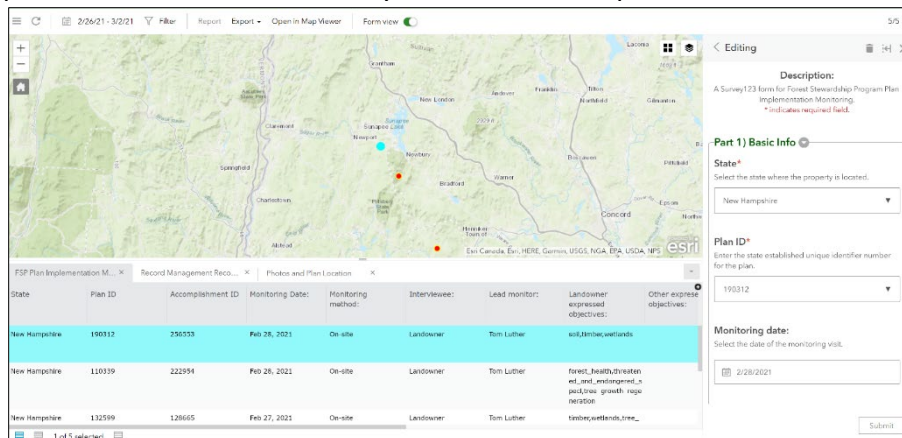
- 4) Switch to the "Data" tab to view a map of survey results:

State	Plan ID	Accomplishment ID	Monitoring Date:	Monitoring method:	Interviewee:	Lead monitor:	Landowner expressed objectives:	Other expressed objectives:	Primary Resource Objective	Other s objective
New Hampshire	190312	256553	Feb 28, 2021	On-site	Landowner	Tom Luther	soil,fire&wetlands		fish_a_wildfire,fire,threatened_and_endangered_s	threatened_and_endangered_s
New Hampshire	110239	222954	Feb 28, 2021	On-site	Landowner	Tom Luther	forest_health,threatened_and_endangered_s,pest,tree_growth_conditions		forest_health,threatened_and_endangered_s	pest,tree_growth_conditions
New Hampshire	132199	128655	Feb 27, 2021	On-site	Landowner	Tom Luther	timber&wetlands,tree		forest_health,biolive	

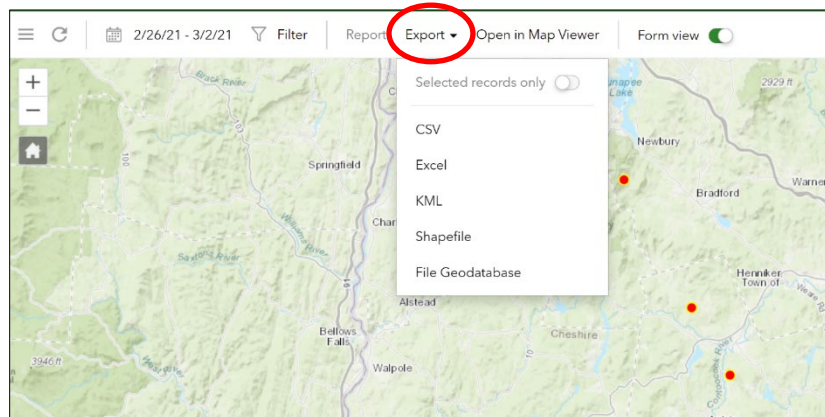
5) Click on a record in the table to view the details for that record:



6) Click the pen icon  to edit survey values and then press submit when finished:

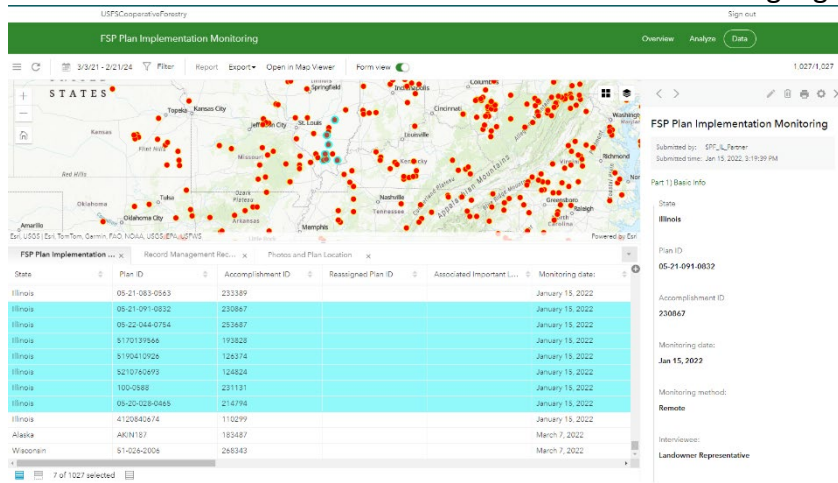


7) Click the “Export” button to export database to CSV, Excel, KML, Shapefile, or File Geodatabase formats:

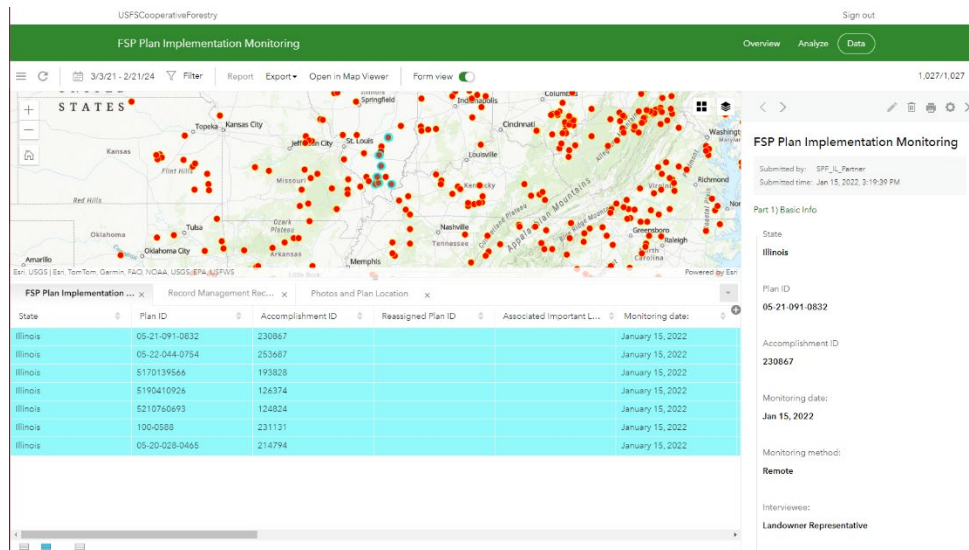
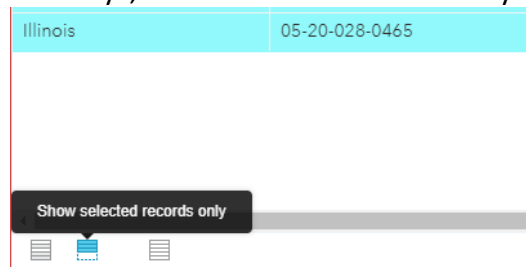


8) If you simply click the “Export” button in Step 7, it will export all entries you have created. However, if you’d like to export a subset of the records you have collected, or a single entry, simply select that entry from the map. To select multiple records for your state or territory,

please select the first record of your choosing and then press the “Shift” button on your keyboard to select the last set of records. The selected records will be highlighted in blue.



- If you would like to see only the records you selected in the table, you can select the second icon at the bottom of your browser window. A callout window will appear when you hover over the icon that says, “Show selected records only.”



- Then click ‘Selected Records Only’ to export the data to a CSV, Excel, KML, Shapefile, or File Geodatabase.

